



GARRATT LANE, SW18

£425,000

- One double bedroom
- Communal garden
- High specification
- Secured allocated parking
- Sought after location
- Energy rating: C



1



1



1



ABOUT THE HOME

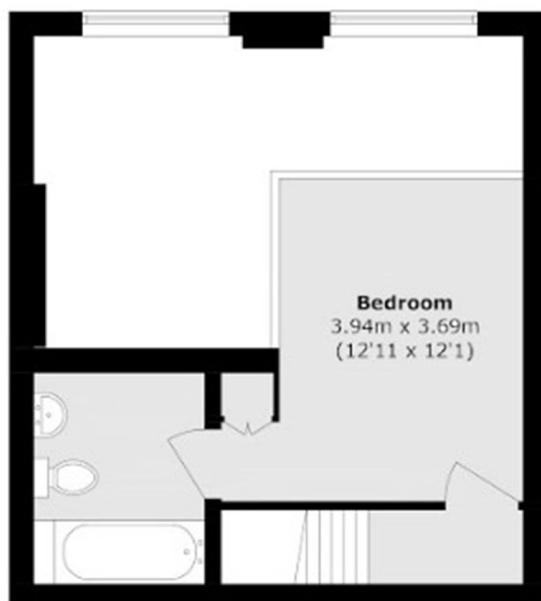
A charming one double bedroom, mezzanine apartment in the heart of Earlsfield.

Situated on the first floor of a beautiful converted Victorian school building this property retains a wealth of period features. Accommodation comprises; spacious hallway with storage cupboards, reception room open plan to the dining and kitchen areas with high ceilings and beautiful sash windows that flood the apartment with natural light. The kitchen is renovated by the current owner to an exceptional standard. Stairs lead to a generously sized double bedroom at mezzanine level benefitting from built in storage and a modern bathroom. Further benefits include; allocated underground parking, well looked after communal gardens and no onward chain.

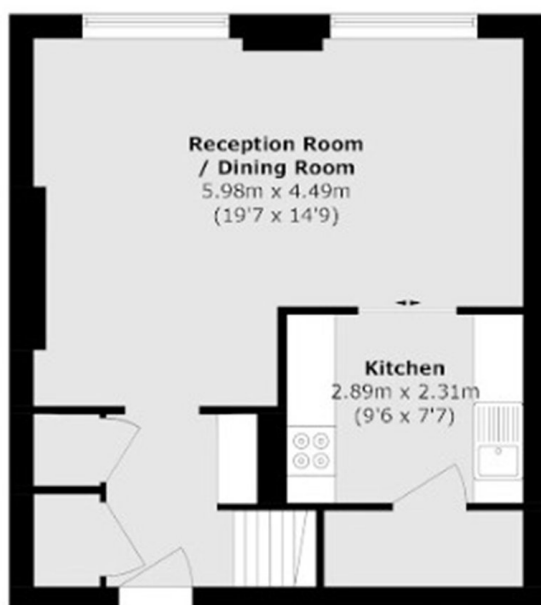
Voltaire Buildings' is a stones throw from Earlsfield's mainline station; offering quick access to Clapham Junction, London Waterloo and Wimbledon stations. The location is also very well served by excellent restaurants, bars, leisure and shopping facilities all within walking distance of the property.







Mezzanine



First Floor

Total area (approx.): 62.4 sq. m (671.6 sq. ft)

JACKSONS EARLSFIELD

372-374 Garratt Lane,
Earlsfield, London, SW18 4ES
Sales: 020 8971 7979
Lettings: 020 8971 7070

Energy Rating: C We aim to make our particulars both accurate and reliable. However they are not guaranteed; nor do they form part of an offer or contract. If you require clarification on any points then please contact us, especially if you're traveling some distance to view. Please note that appliances and heating systems have not been tested and therefore no warranties can be given as to their good working order.