



EARLSFIELD ROAD, SW18

£500,000

- Victorian split level flat
- Two bedrooms
- Lovely condition
- Private front garden
- Desirable location
- Energy rating: C



2



1



1



ABOUT THE HOME

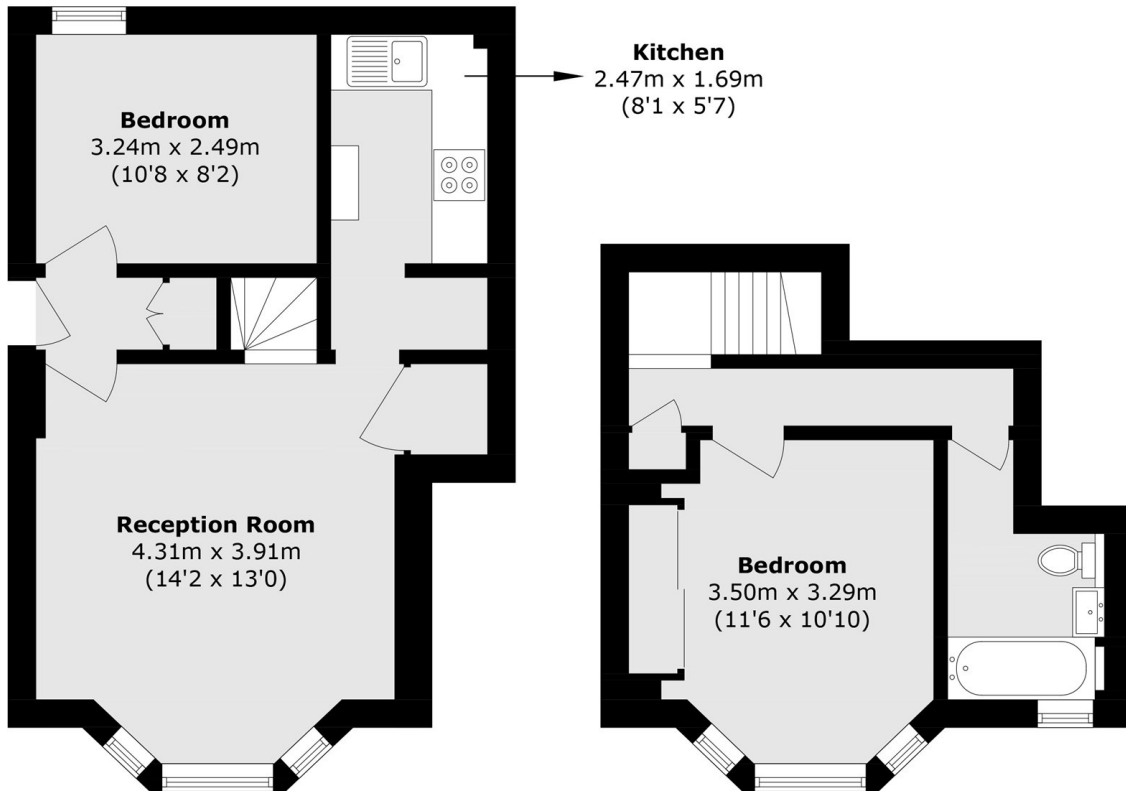
A beautifully presented two double bedroom, ground and first floor, Victorian Maisonette.

Accommodation comprises a bright and spacious reception room, separate kitchen and a good sized double bedroom, currently being utilised as a home office as well as generous built in storage. On the first floor there is the second of the two bedrooms again benefitting from built in storage and a modern bathroom. The property benefits from its own private front garden.

Earlsfield Road is one of Earlsfield's highly sought after roads of similar Victorian buildings with incredible curb appeal. This location is very well served by excellent transport links, trendy coffee shops, boutique stores, bars, and restaurants which are all within close proximity. The property is within 0.5miles of Earlsfield Mainline Station with fast connections to Central London for effortless commuting.







Ground Floor

First Floor

Total area (approx.): 53.9 sq. m (580.1 sq. ft)

JACKSONS EARLSFIELD

372-374 Garratt Lane,
Earlsfield, London, SW18 4ES
Sales: 020 8971 7979
Lettings: 020 8971 7070

Energy Rating: C We aim to make our particulars both accurate and reliable. However they are not guaranteed; nor do they form part of an offer or contract. If you require clarification on any points then please contact us, especially if you're traveling some distance to view. Please note that appliances and heating systems have not been tested and therefore no warranties can be given as to their good working order.