



ST. GEORGES GROVE, SW17

£450,000

- Two double bedrooms
- First floor
- Private balcony
- Allocated parking space
- Sought after development
- Energy rating: B



2



2



1

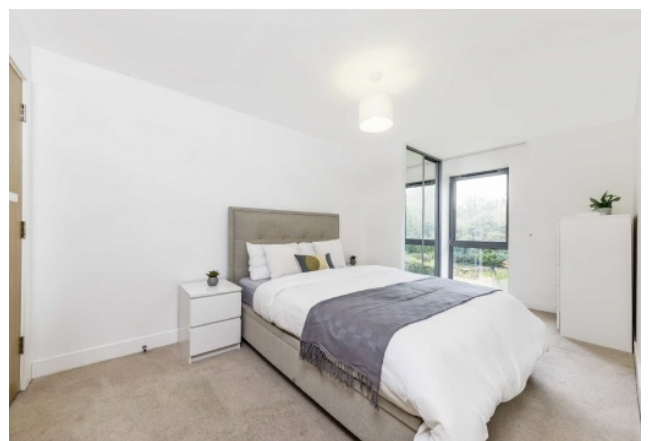


ABOUT THE HOME

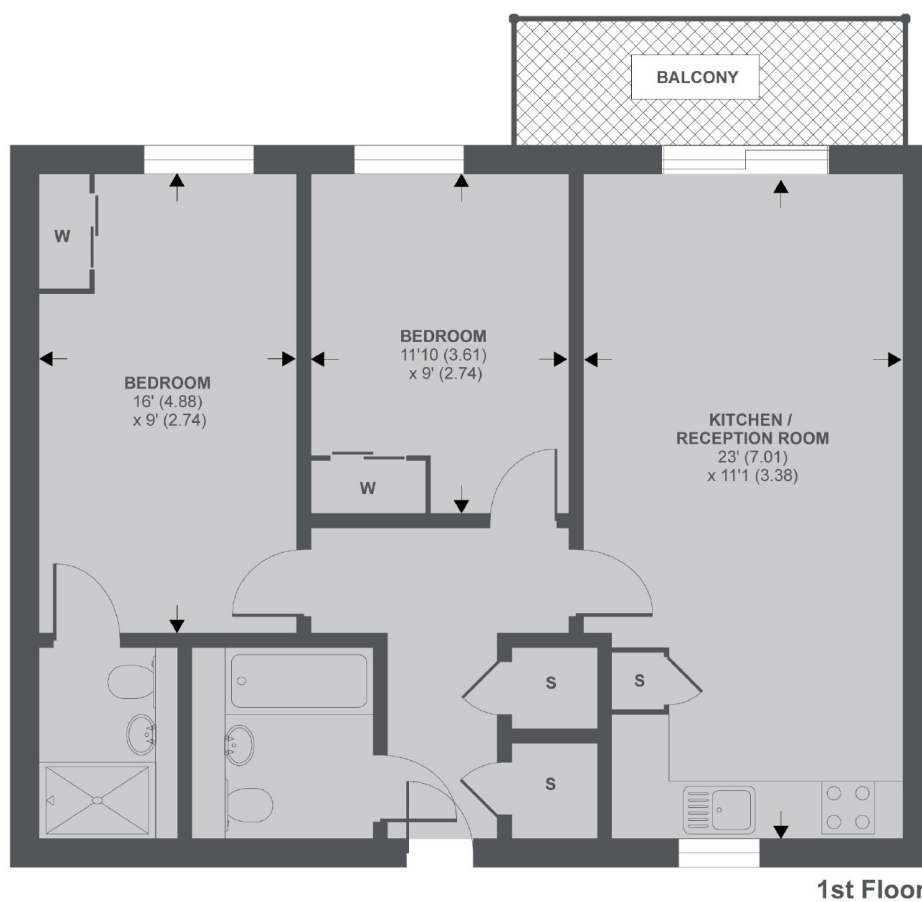
A two double bedroom, two bathroom modern apartment benefiting from allocated parking and a balcony overlooking the communal gardens.

Situated on the first floor accommodation comprises: an entrance hall with secure telephone entry system and useful storage cupboards, modern spacious bathroom, two generous bedrooms with built-in wardrobes; the principle bedroom benefiting from an en suite bathroom, open plan reception, kitchen and dining with door leading out to a private balcony.

Fitzgerald House is located in the highly sought after 'Quadrangle' development, offering easy access to either Earlsfield mainline railway, Tooting Broadway underground station or Wandsworth Common for direct trains into London Victoria.







APPROX FLOOR AREA 698 SQ.FT 64.8 SQ.M

Copyright nichecom.co.uk 2019 REF : 503213

JACKSONS EARLSFIELD

372-374 Garratt Lane,
Earlsfield, London, SW18 4ES
Sales: 020 8971 7979
Lettings: 020 8971 7070

Energy Rating: B We aim to make our particulars both accurate and reliable. However they are not guaranteed; nor do they form part of an offer or contract. If you require clarification on any points then please contact us, especially if you're traveling some distance to view. Please note that appliances and heating systems have not been tested and therefore no warranties can be given as to their good working order.