



ASLETT STREET, SW18

£475,000

- Victorian ground floor flat
- One double bedroom
- Well kept private garden
- Share of freehold
- Sought after location
- Energy rating: D



1



1



1



ABOUT THE HOME

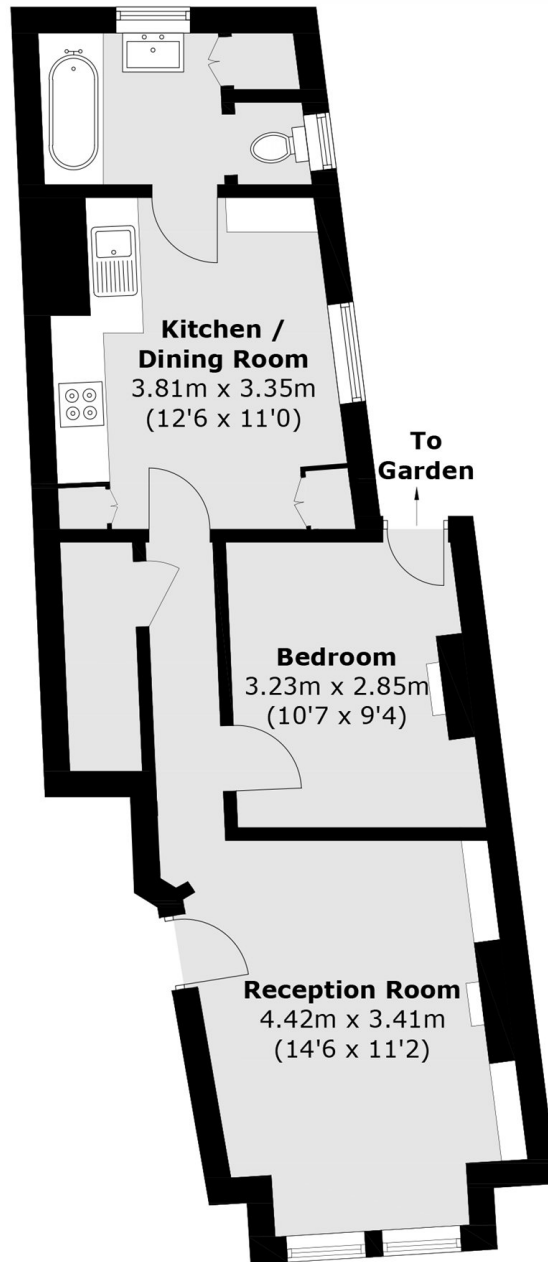
A charming, one bedroom, Victorian ground floor apartment boasting a large private garden and a share of the freehold.

This property is situated in a prime Earlsfield location and has been beautifully decorated by it's current owner. Accommodation comprises; a spacious lounge benefitting from an abundance of natural light and feature fireplace, there is a double bedroom with access onto the garden via the side return, the kitchen provides lots of storage and ample space for dining and there is a modern bathroom to the rear.

Aslett Street is on one of Earlsfield's most sought after residential roads, being within easy reach of Earlsfield mainline offering fast train links to Central London for effortless commuting. Garratt Lane's trendy coffee shops, boutique stores, bars, and restaurants are within walking distance for a vibrant lifestyle.







Total area (approx.): 48.9 sq. m (526.3 sq. ft)

JACKSONS EARLSFIELD

372-374 Garratt Lane,
Earlsfield, London, SW18 4ES
Sales: 020 8971 7979
Lettings: 020 8971 7070

Energy Rating: D We aim to make our particulars both accurate and reliable. However they are not guaranteed; nor do they form part of an offer or contract. If you require clarification on any points then please contact us, especially if you're traveling some distance to view. Please note that appliances and heating systems have not been tested and therefore no warranties can be given as to their good working order.