



RAVENSBURY ROAD, SW18

£700,000

- Victorian split level flat
- Two double bedrooms
- Separate kitchen/living
- Private garden
- Desirable location
- Energy rating: D





ABOUT THE HOME

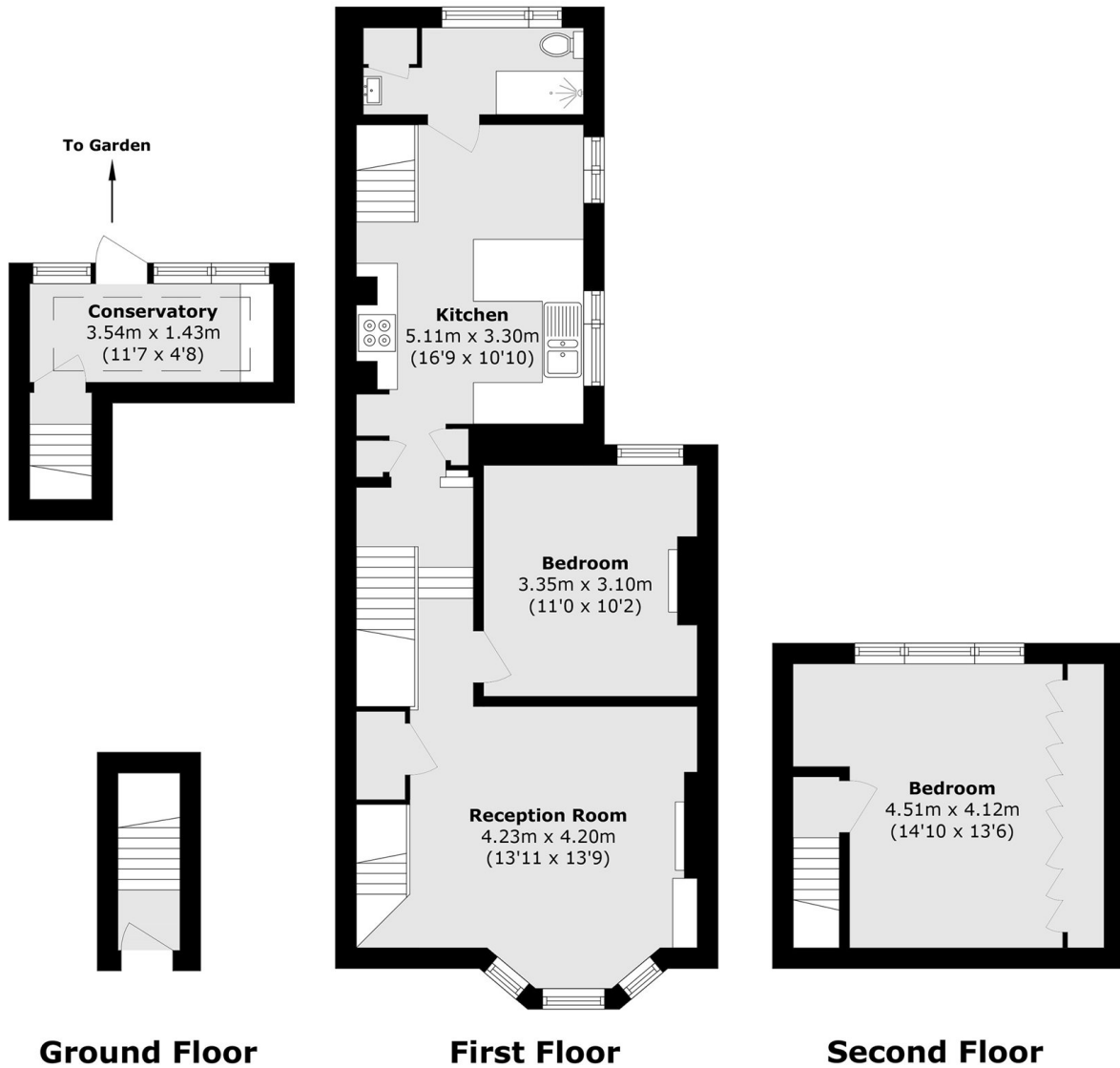
A beautifully presented, two double bedroom, Victorian conversion flat benefitting from a private garden.

This charming property is in excellent condition throughout, is exceptionally bright and retains a wealth of period features. Accommodation comprises; wide entrance hall, two well presented double bedrooms, spacious and bright reception room, modern bathroom and a kitchen/dining room leading on to a low maintenance garden.



Ravensbury Road is a much sought after road in Earlsfield, the property is well placed for some of the most desirable schools in the area and is 0.3 miles from Earlsfield mainline station. Garratt Lane with its vast array of trendy shops, bars and restaurants is within easy reach. The green open spaces of King George's Park are also close by.





Total area (approx.): 84.1 sq. m (905.3 sq. ft)

JACKSONS EARLSFIELD

372-374 Garratt Lane,
Earlsfield, London, SW18 4ES
Sales: 020 8971 7979
Lettings: 020 8971 7070

Energy Rating: D We aim to make our particulars both accurate and reliable. However they are not guaranteed; nor do they form part of an offer or contract. If you require clarification on any points then please contact us, especially if you're traveling some distance to view. Please note that appliances and heating systems have not been tested and therefore no warranties can be given as to their good working order.