



ABOYNE ROAD, SW17

£4,250 PCM

- Four Bedrooms
- Great Garden
- Two Bathrooms
- Excellent Condition
- Private garden
- Energy rating: C



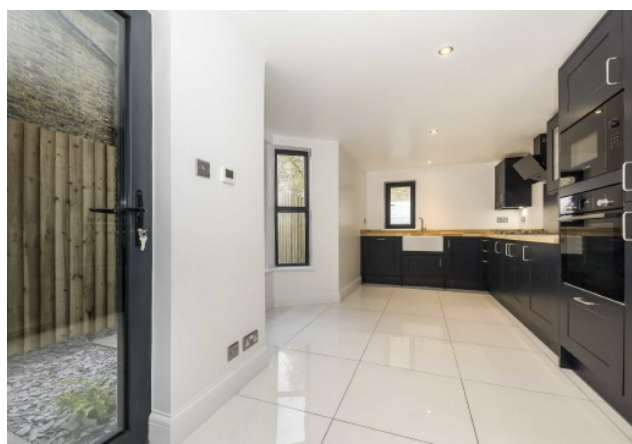


ABOUT THE HOME

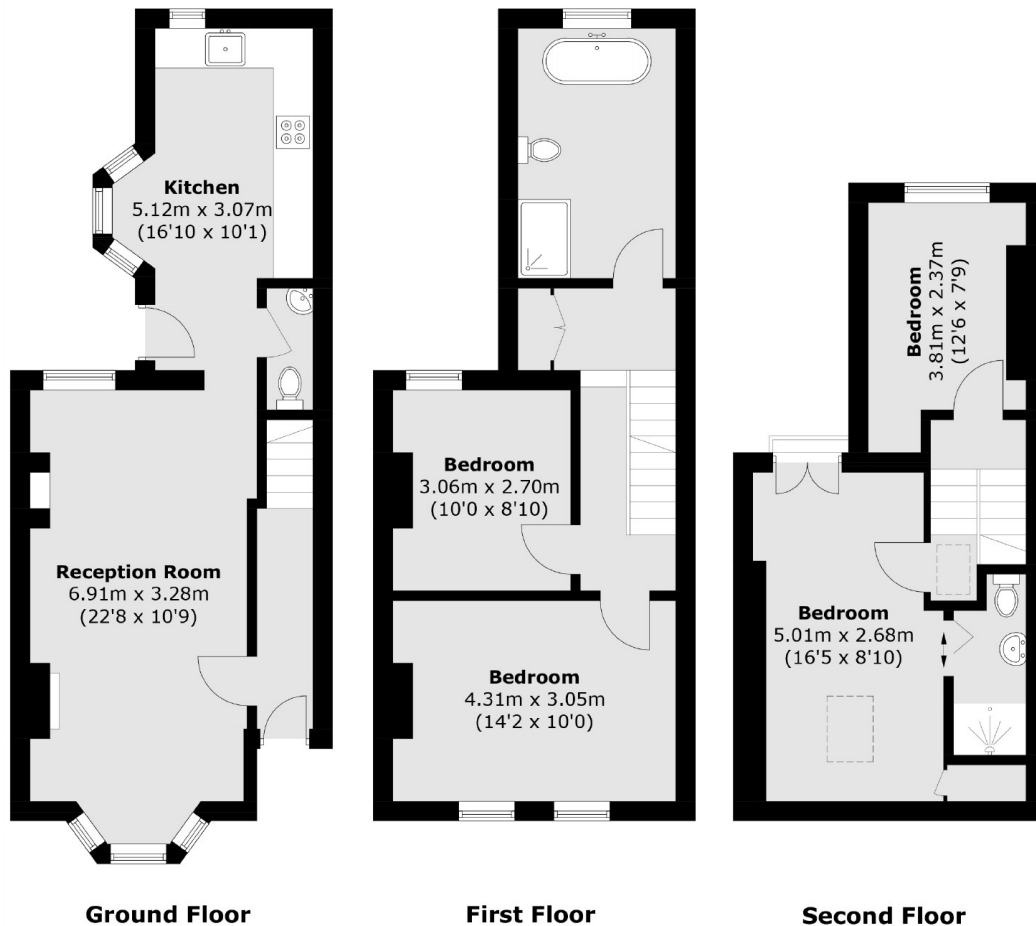
Four bedroom mid terrace Victorian house which has been renovated to an excellent standard.

The property has been extended into the loft creating a great home whilst retaining a wealth of original period features. Accommodation comprises; entrance hall, elegant double reception room and fantastic kitchen/dining room offering a great entertaining space with door leading to a rear garden. There are four double bedrooms and two bathrooms on the upper floors.

Situated on a sought after location offering easy access to Earlsfield mainline railway station, Tooting Broadway underground station and Garratt Lane's array of amenities. The green open spaces of Wandsworth Common and Garratt Green are also close by.







Total area (approx.): 111.7 sq. m (1,202.2 sq. ft)

JACKSONS EARLSFIELD

372-374 Garratt Lane,
Earlsfield, London, SW18 4ES
Sales: 020 8971 7979
Lettings: 020 8971 7070

Energy Rating: We aim to make our particulars both accurate and reliable. However they are not guaranteed; nor do they form part of an offer or contract. If you require clarification on any points then please contact us, especially if you're traveling some distance to view. Please note that appliances and heating systems have not been tested and therefore no warranties can be given as to their good working order.