



BODMIN STREET, SW18

£425,000

- Large double bedroom
- Residents parking
- Communal garden
- Ground floor
- Private entrance
- Energy rating: C



1



1



1



## ABOUT THE HOME

A well-presented ground floor apartment situated in close proximity to King George's Park.

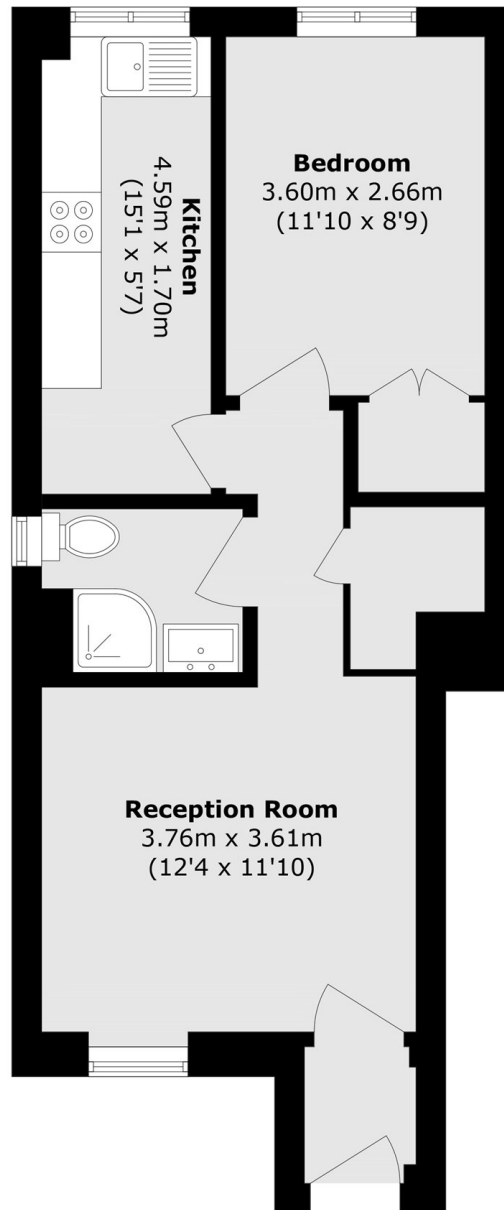
Finished to an excellent standard throughout, the accommodation comprises its own private entrance, a useful entrance hallway, a modern, newly renovated kitchen, and a contemporary bathroom. There is a spacious double bedroom with built-in wardrobes, along with a generously sized living room offering ample space for both living and dining. Further benefits include residents' parking and access to a communal garden.

Bodmin Street is a lovely quiet location, being equidistant from both Earlsfield over ground and Southfields underground giving you great accessibility to central London. Garratt Lanes array of trendy bars, restaurants and shops are within walking distance









Total area (approx.): 43.9 sq. m (472.5 sq. ft)

#### JACKSONS EARLSFIELD

372-374 Garratt Lane,  
Earlsfield, London, SW18 4ES  
Sales: 020 8971 7979  
Lettings: 020 8971 7070

Energy Rating: C We aim to make our particulars both accurate and reliable. However they are not guaranteed; nor do they form part of an offer or contract. If you require clarification on any points then please contact us, especially if you're traveling some distance to view. Please note that appliances and heating systems have not been tested and therefore no warranties can be given as to their good working order.