



GODLEY ROAD, SW18

£530,000

- First floor maisonette
- Two double bedrooms
- Large private garden
- No onward chain
- Separate kitchen/living
- Energy rating: D



2



1



1



## ABOUT THE HOME

A well presented, purpose built maisonette located within close proximity to Earlsfield station and offering a large, secluded garden.

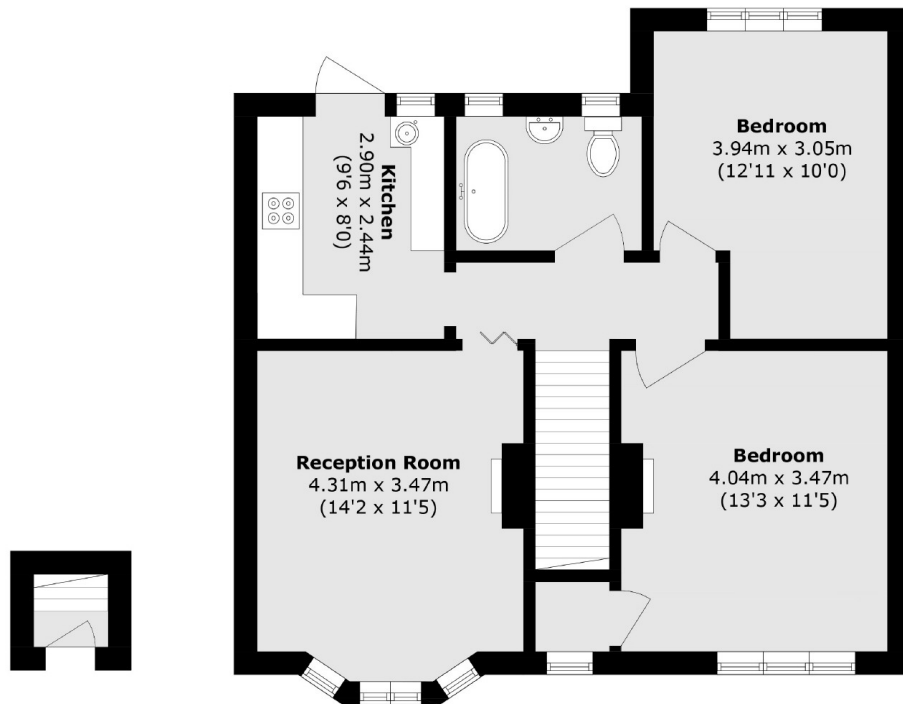
Entered via it's own front door this property boasts; two spacious double bedrooms, a generous family bathroom, bright lounge and separate kitchen providing access to a large, private garden. The property is being offered to the market with no onward chain.

Godley Road is on one of Earlsfield's most sought after residential roads, being within easy reach of Earlsfield mainline offering fast train links to Central London for effortless commuting. Garratt Lane's trendy coffee shops, boutique stores, bars, and restaurants are just a stones throw away for a vibrant lifestyle.









Total area (approx.): 61.2 sq. m (658.7 sq. ft)

#### JACKSONS EARLSFIELD

372-374 Garratt Lane,  
Earlsfield, London, SW18 4ES  
Sales: 020 8971 7979  
Lettings: 020 8971 7070

Energy Rating: D We aim to make our particulars both accurate and reliable. However they are not guaranteed; nor do they form part of an offer or contract. If you require clarification on any points then please contact us, especially if you're traveling some distance to view. Please note that appliances and heating systems have not been tested and therefore no warranties can be given as to their good working order.