



Rosedene Avenue, SW16

£4,500 PCM

A spacious five bedroom house situated on a residential street a moments walk from Dunraven School. This house boasts spacious rooms, private garden, two bathrooms, stylish reception and off street gated parking.

- Five Bedrooms
- Private Garden
- Private Gated Parking
- Spacious Reception
- Two Bathrooms
- EPC Rating - C

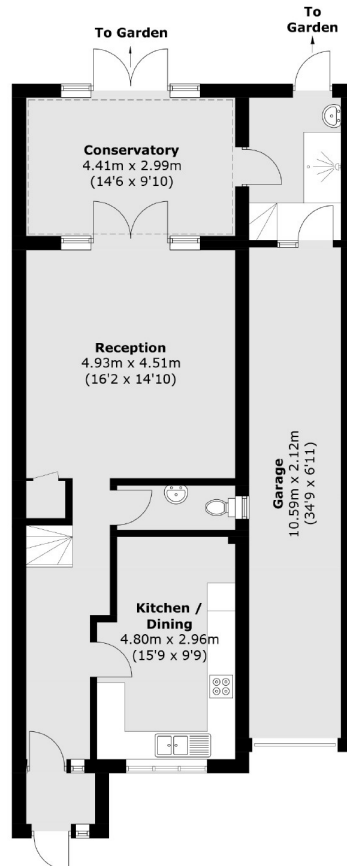
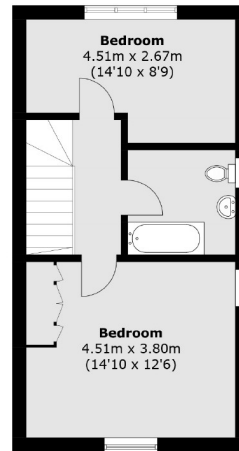
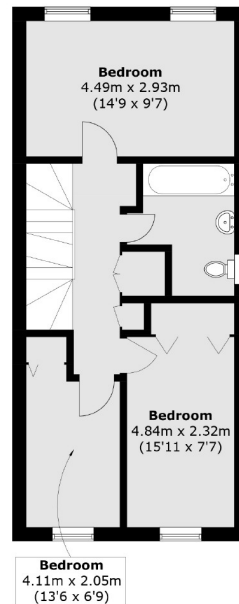
For further information on the costs associated with renting a property, please pop into our office or visit our website.



Located on a quiet residential road but within close proximity to Streatham Hill train station and the many shops, bars and restaurants along Streatham High Road close to the open green spaces of Tooting Commons, offering expansive green spaces perfect for outdoor activities and relaxation

close to the open green spaces of Tooting Commons.




Ground Floor

Second Floor

First Floor

Total area (approx.): 188.3 sq. m (2,026.8 sq. ft)
(Including Garage)

Jacksons Streatham
1-3 De Montfort Parade
Streatham High Road
Streatham
London
SW16 1BU

Energy Rating: We aim to make our particulars both accurate and reliable. However they are not guaranteed; nor do they form part of an offer or contract. If you require clarification on any points then please contact us, especially if you're traveling some distance to view. Please note that appliances and heating systems have not been tested and therefore no warranties can be given as to their good working order.