



KINGSCOURT ROAD, SW16

£695,000

- Victorian garden flat
- High-spec throughout
- Two bedrooms
- Beautiful landscaped garden
- Close to Tooting Bec Common
- Energy rating: C





ABOUT THE HOME

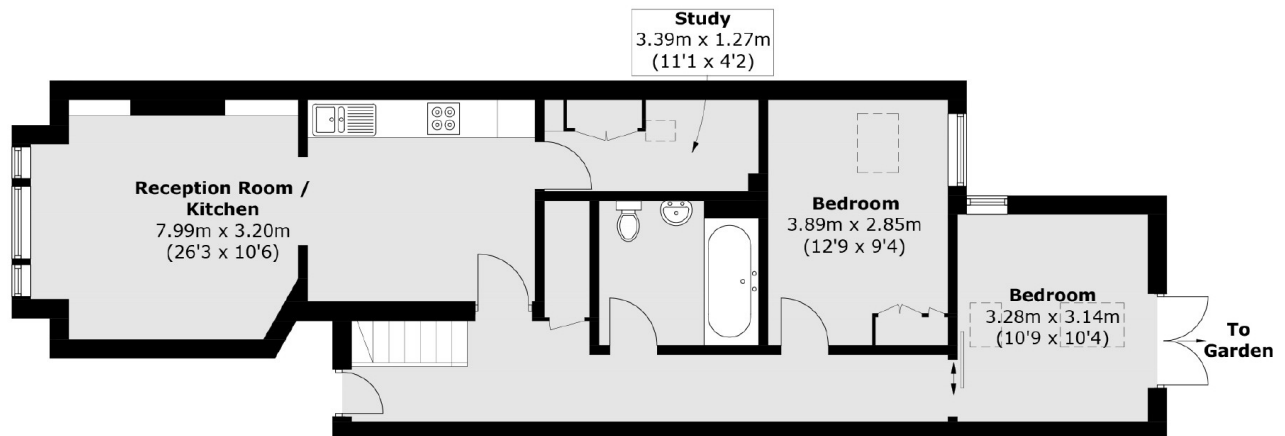
A beautiful Victorian conversion flat combining period charm with elegant, thoughtfully designed interiors. The property features a spacious open-plan kitchen and living area, bespoke larder and wardrobes, new flooring throughout, a study, and basement. The recently landscaped garden offers a beautiful private outdoor space. While Tooting Bec Common and Streatham Hill are close by.



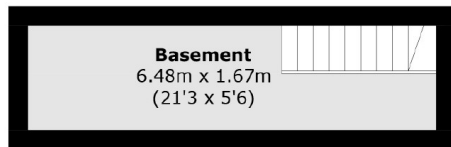
Kingscourt road is an extremely coveted road, primarily for its preferable location positioned between Streatham High Road and Tooting Bec Common. Residents have easy access to the array of independent shops, bars, restaurants and popular commercial establishments of both Streatham High Road and Balham - accessible via a walk through the common. There are also a number of transport links including the Southern via Streatham Hill, the Thameslink via Streatham and a number of regular bus routes into the City via Brixton where you can access the Victoria Underground Line.







Ground Floor



Basement

Approx Internal Area: 87.5 sq. m (941.8 sq. ft)

JACKSONS STREATHAM

1-3 De Montfort Parade,
Streatham High Road,
Sales: 020 8487 3179
Lettings: 020 8487 3180

Energy Rating: C We aim to make our particulars both accurate and reliable. However they are not guaranteed; nor do they form part of an offer or contract. If you require clarification on any points then please contact us, especially if you're traveling some distance to view. Please note that appliances and heating systems have not been tested and therefore no warranties can be given as to their good working order.