



TELFORD AVENUE, SW2

£300,000

- One bedroom
- Semi open plan
- Contemporary finish
- Ideal central location
- Residents parking
- Energy rating: C



1



1



1



## ABOUT THE HOME

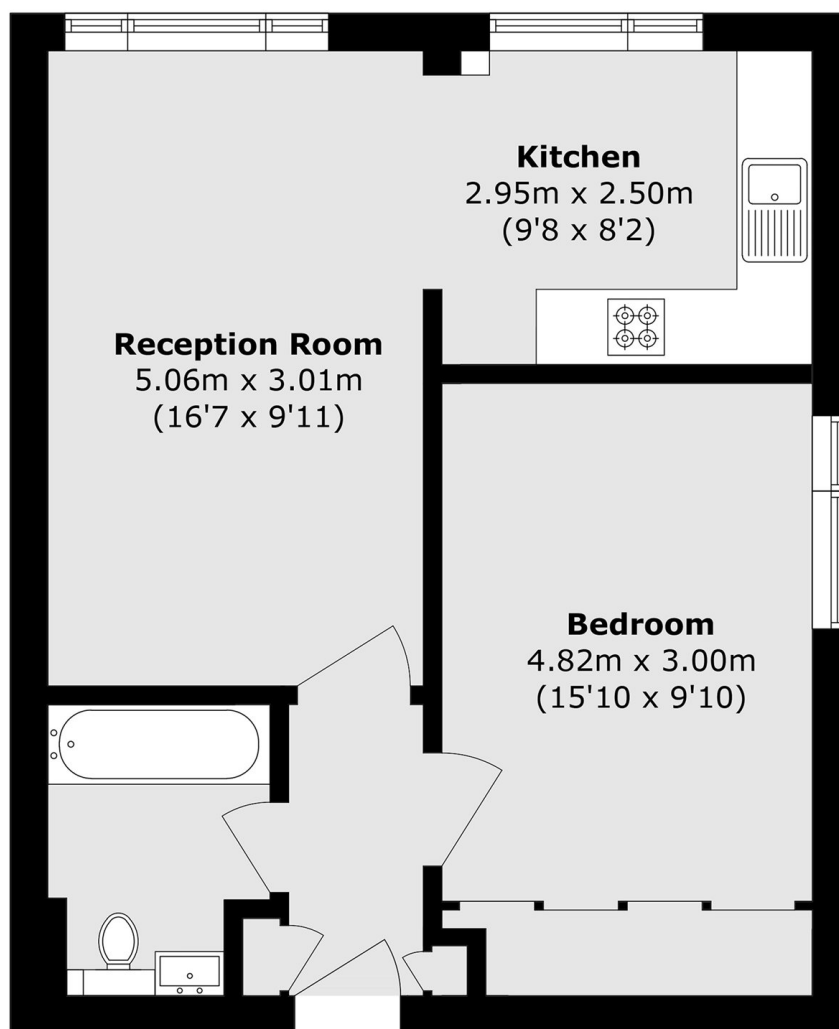
An excellently presented, bright, semi open plan one bedroom apartment with a contemporary finish and ample storage throughout. Situated in an exceptionally convenient location that provides access to both Streatham Hill & Brixton stations as well having Tooting Bec common within half a mile.

Located on the highly regarded Telford Avenue, just off Streatham hill leading onto Streatham high Road that hosts a variety of both chain and independent restaurants and pubs, shops, gyms and the cinema. There are multiple options for transport, with both Streatham Hill mainline station & Balham underground within easy access. There are also excellent bus routes providing access to Brixton for the Victoria line. The green open spaces of Tooting Bec Common are also located at the bottom of the road.









Total area (approx.): 45.8 sq. m (493.0 sq. ft)

#### JACKSONS STREATHAM

1-3 De Montfort Parade,  
Streatham High Road,  
Sales: 020 8487 3179  
Lettings: 020 8487 3180

Energy Rating: C We aim to make our particulars both accurate and reliable. However they are not guaranteed; nor do they form part of an offer or contract. If you require clarification on any points then please contact us, especially if you're traveling some distance to view. Please note that appliances and heating systems have not been tested and therefore no warranties can be given as to their good working order.