



HEATHDENE ROAD, SW16

£595,000

- Two double bedrooms
- Large private garden
- Share of freehold
- Two bathrooms
- Close to Streatham Common
- Energy rating: D



2



2



1



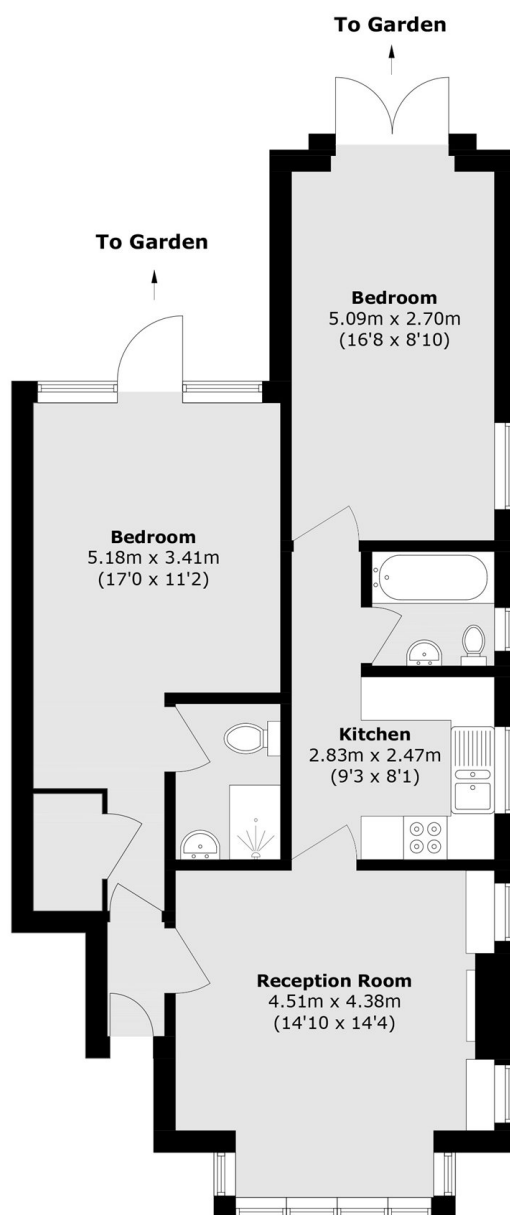
ABOUT THE HOME

A beautifully presented and exceptionally spacious two double bedroom flat, benefitting from a large private garden on a quiet road close to Streatham Common park. This wonderful home has been meticulously looked after by its current owners and offers a share of freehold.

Situated on a sought after residential road in the heart of Streatham Common, this property is ideally located within close proximity to the social hub of Streatham High Road. These include; numerous bars, independent coffee shops, restaurants, several large supermarkets, and leisure centre. Commuters are able to access London Bridge, Blackfriars and Victoria with swift services from the two local railway stations and regular bus routes to Brixton tube station.







Total area (approx.): 71.3 sq. m (767.4 sq. ft)

JACKSONS STREATHAM

1-3 De Montfort Parade,
Streatham High Road,
Sales: 020 8487 3179
Lettings: 020 8487 3180

Energy Rating: D We aim to make our particulars both accurate and reliable. However they are not guaranteed; nor do they form part of an offer or contract. If you require clarification on any points then please contact us, especially if you're traveling some distance to view. Please note that appliances and heating systems have not been tested and therefore no warranties can be given as to their good working order.