



MITCHAM LANE, SW16

£550,000

- Four bedrooms
- Excellent condition
- Two bathrooms
- Furzedown Location
- Excellent school catchments
- Energy rating:



3



2



1



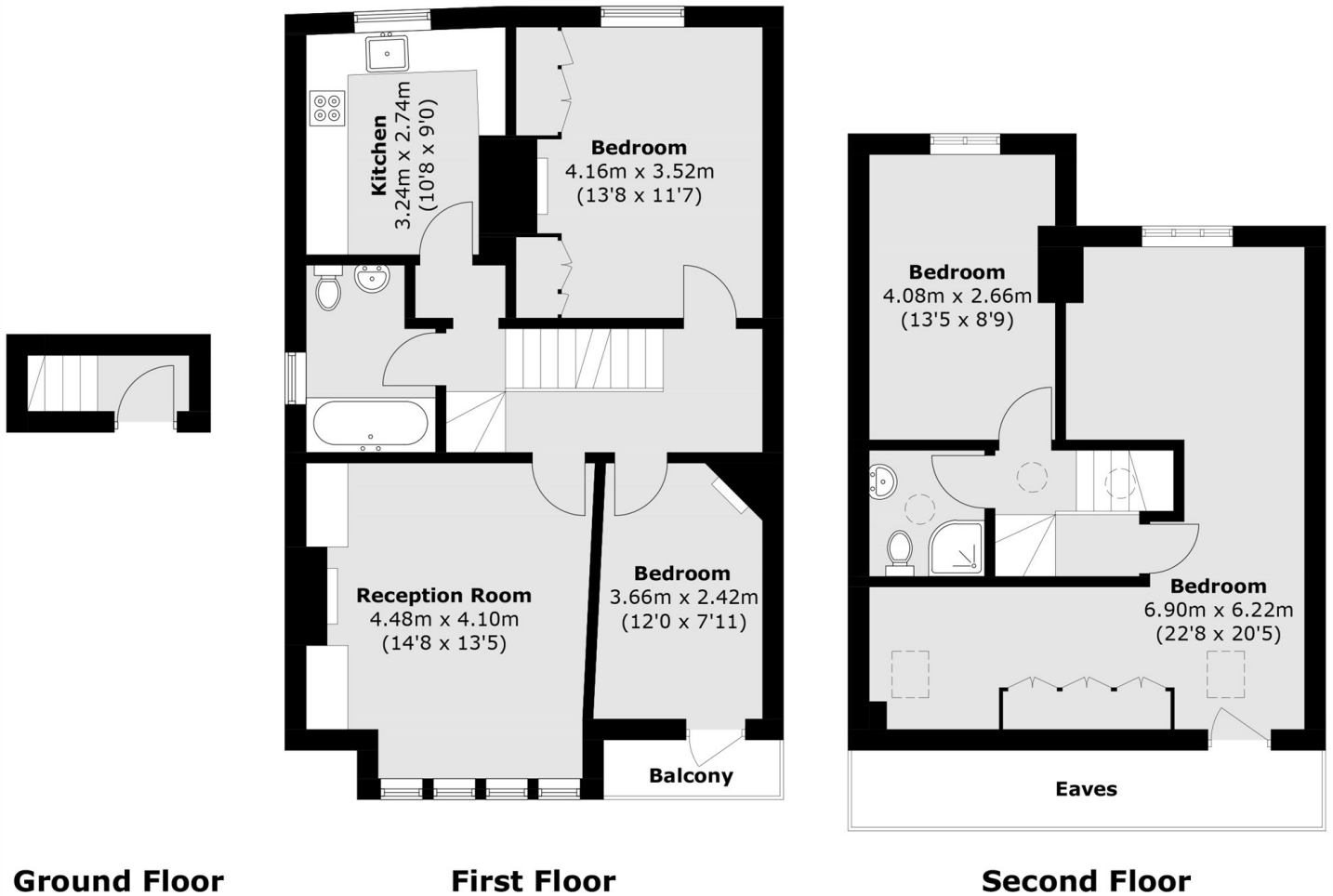
ABOUT THE HOME

A charming Edwardian first floor split level flat. The property is in excellent condition and is over 1200 sq ft, maximising indoor living space. The property boasts several original fireplaces and features a balconette.

Mitcham Lane is located in Furzedown, a highly desirable area between Tooting and Streatham. Links into the city are available via a short walk to Streatham Common Overground Station, or a small commute to Tooting Broadway Tube. There are many bus links near by offering services through Tooting, Streatham, Mitcham Lane is also nearby many great local amenities. Furzedown is renowned for being home to several outstanding primary schools and the highly desired Graveney Secondary school.







Total area (approx.): 115.7 sq. m (1,245.4 sq. ft)
(Excluding Eaves)
Balcony: 2.0 sq. m (21.5 sq. ft)

JACKSONS STREATHAM

1-3 De Montfort Parade,
Streatham High Road,
Sales: 020 8487 3179
Lettings: 020 8487 3180

Energy Rating: C We aim to make our particulars both accurate and reliable. However they are not guaranteed; nor do they form part of an offer or contract. If you require clarification on any points then please contact us, especially if you're traveling some distance to view. Please note that appliances and heating systems have not been tested and therefore no warranties can be given as to their good working order.