



## MONARCH MEWS, SW16

£325,000

- Two double bedrooms
- Top floor
- Allocated parking
- Gated residency
- Open plan
- Energy rating: C



2



1



1





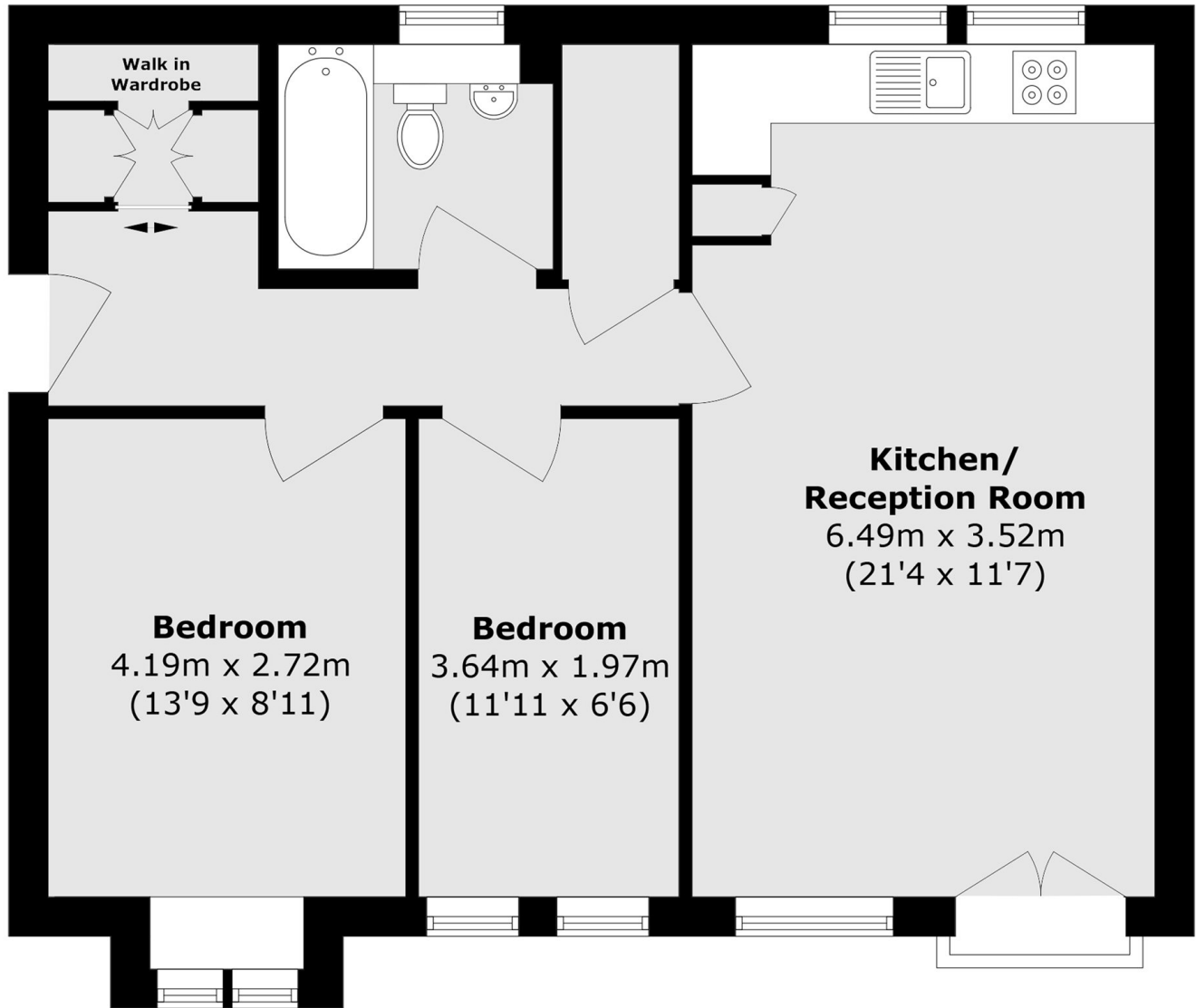
## ABOUT THE HOME

A well presented open plan top floor two bedroom apartment, set within a secure gated development with allocated parking.

Monarch Mews is a quiet, gated development situated on Crown Lane. The amenities of Streatham High road are within easy access and the two local stations are Streatham main line with swift links into London Bridge and West Norwood with links to central London.







Total area (approx.): 55.2 sq. m (594.1 sq. ft)

#### JACKSONS STREATHAM

1-3 De Montfort Parade,  
Streatham High Road,  
Sales: 020 8487 3179  
Lettings: 020 8487 3180

Energy Rating: C We aim to make our particulars both accurate and reliable. However they are not guaranteed; nor do they form part of an offer or contract. If you require clarification on any points then please contact us, especially if you're traveling some distance to view. Please note that appliances and heating systems have not been tested and therefore no warranties can be given as to their good working order.