



VALLEY ROAD, SW16

£415,000

- Two bedrooms
- Chain Free
- Communal Courtyard
- Bike storage
- Balcony
- Energy rating: C





## ABOUT THE HOME

An beautifully presented two double bedroom, two bathroom open plan dual aspect apartment conveniently located within half a mile of Streatham station, and an even shorter walk to Streatham Common at the top of the road.

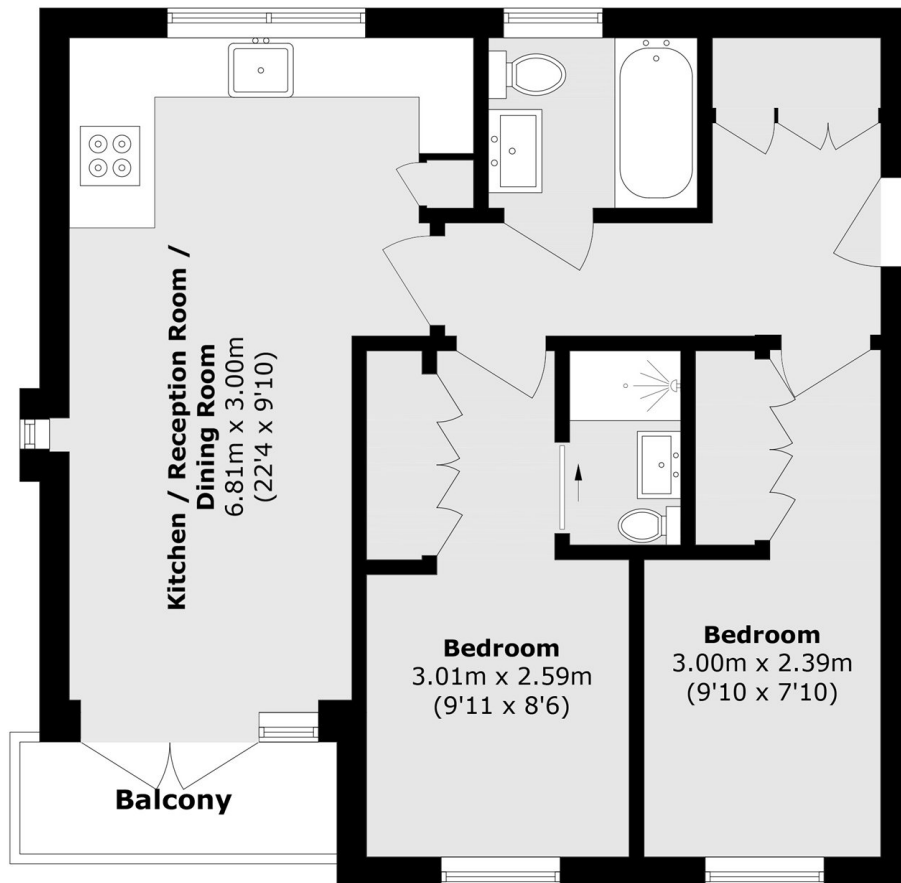
Valley Road is well located for all the amenities of the area including many bars, independent coffee shops, restaurants, several large supermarkets, leisure centre and health clubs. Streatham Common itself has multiple transport links including three train stations and bus routes leading into London.











Total area (approx.): 63.4 sq. m (682.4 sq. ft)

Balcony area (approx.): 3.6 sq. m (38.7 sq. ft)

#### **JACKSONS STREATHAM**

1-3 De Montfort Parade,  
Streatham High Road,  
Sales: 020 8487 3179  
Lettings: 020 8487 3180

Energy Rating: C We aim to make our particulars both accurate and reliable. However they are not guaranteed; nor do they form part of an offer or contract. If you require clarification on any points then please contact us, especially if you're traveling some distance to view. Please note that appliances and heating systems have not been tested and therefore no warranties can be given as to their good working order.