



GREEN LANE, SW16

£795,000

- Four bedrooms
- Semi-detached
- Extension potential
- Off Street parking
- Great location
- Energy rating: C





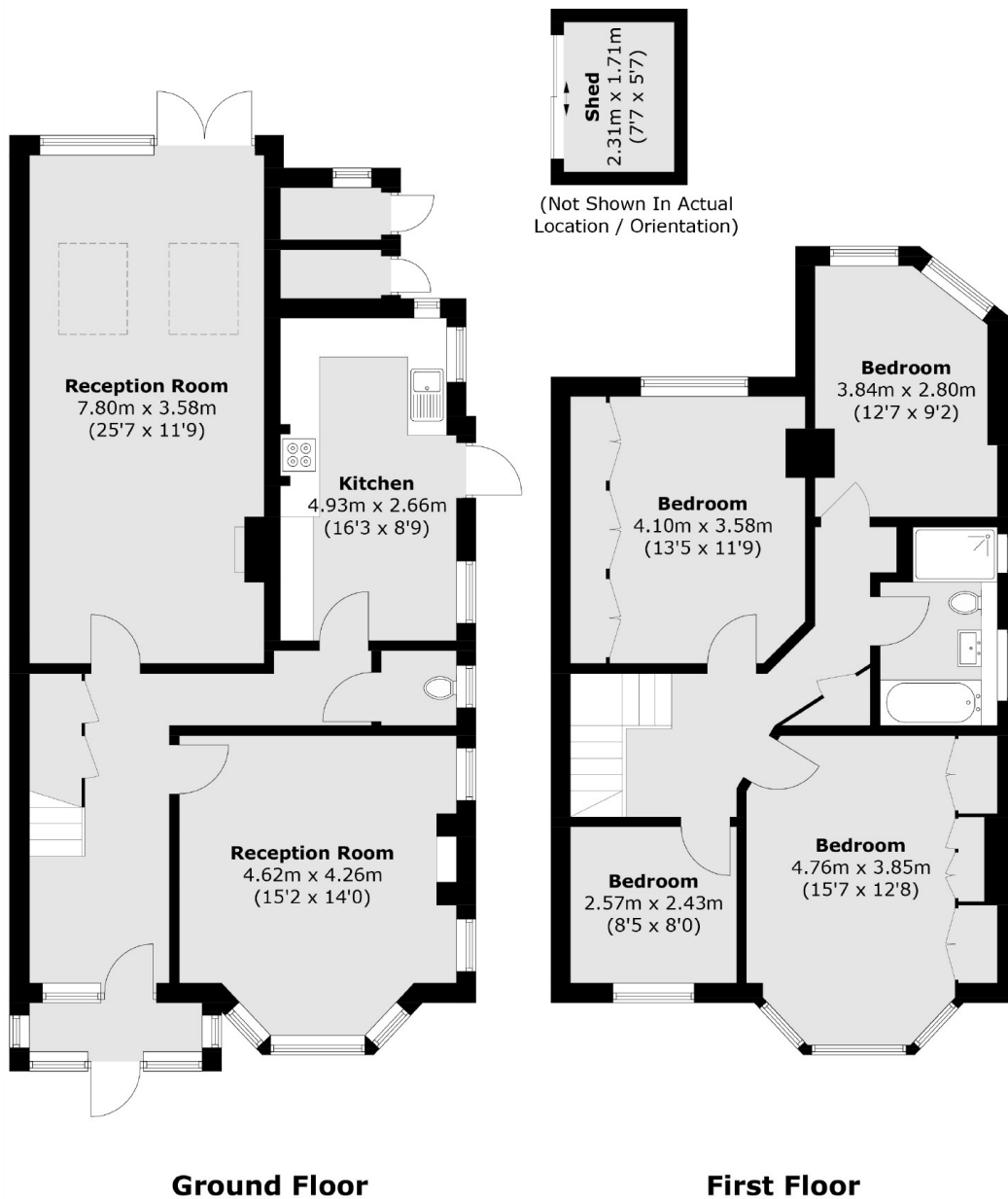
ABOUT THE HOME

A four bedroom semi-detached 1930's house situated on Green Lane. The house benefits from a good sized garden, extension potential as well as off street parking.

Green Lane is situated south of Stretham Common with access to numerous bus routes to the City and Norbury Station. Residents have easy access to a number of local amenities and direct access to Biggin Wood through the rear garden, and with close proximity to the Rookery.







Total area (approx.): 150.2 sq. m (1616.7 sq. ft)
(Including Attached Stores)
Shed (approx.): 3.9 sq. m (42.0 sq. ft)

JACKSONS STREATHAM

1-3 De Montfort Parade,
Streatham High Road,
Sales: 020 8487 3179
Lettings: 020 8487 3180

Energy Rating: C We aim to make our particulars both accurate and reliable. However they are not guaranteed; nor do they form part of an offer or contract. If you require clarification on any points then please contact us, especially if you're traveling some distance to view. Please note that appliances and heating systems have not been tested and therefore no warranties can be given as to their good working order.