



STREATHAM HIGH ROAD, SW16

£375,000

- Open plan living
- Close to local amenities
- Excellent transport links
- Two allocated parking spaces
- Modern interior
- Energy rating: B



2



2



1





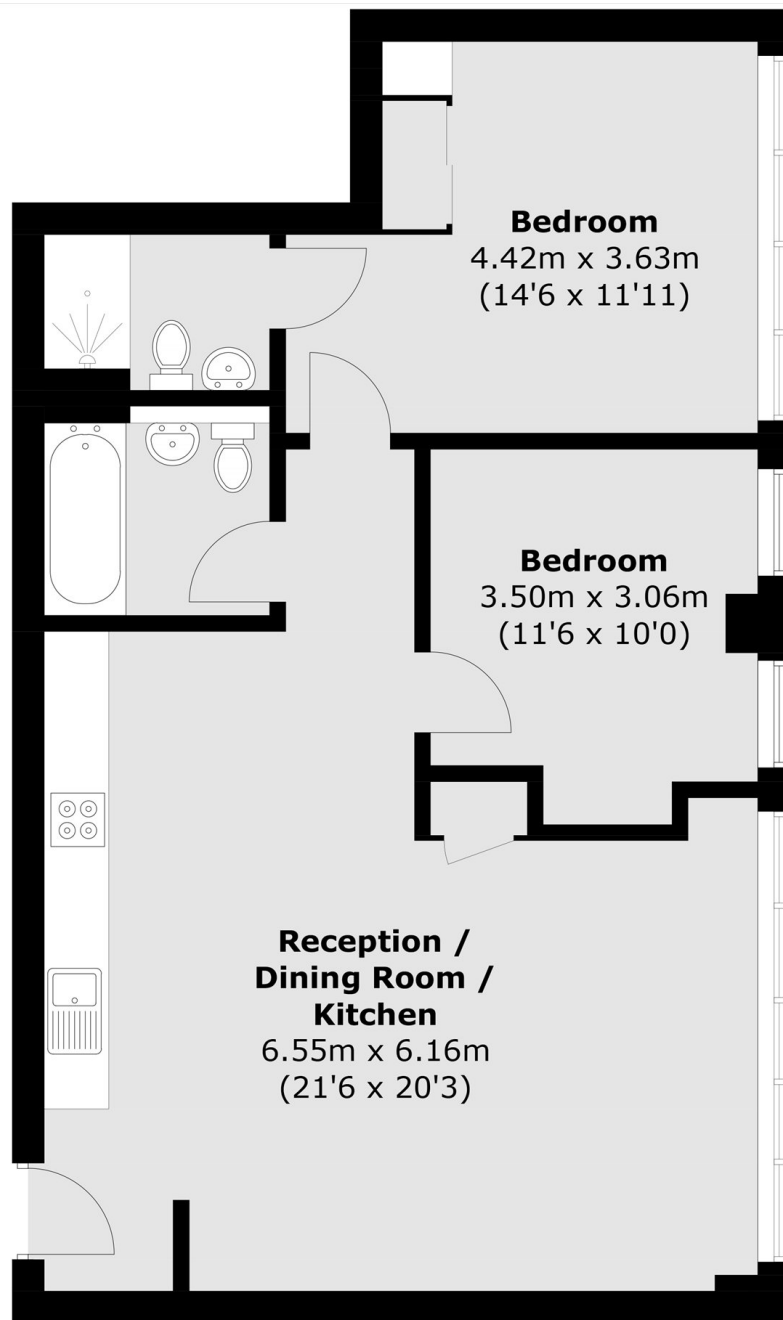
## ABOUT THE HOME

A well presented two-bedroom apartment situated adjacent to Streatham mainline station, and a stone's throw away from Streatham Common park. This wonderful property also benefits from two allocated parking spaces, lift access and double glazing.

Hopton House is a modern development situated in a prime location along Streatham High road. The property is conveniently located opposite to Streatham mainline station and an array of local bus routes and the hub development, incorporating retail, sport and leisure facilities. Streatham Common train station is a short distance away also. Viewings come highly recommended.







Total area (approx.): 71.9 sq. m (773.9 sq. ft)

#### JACKSONS STREATHAM

1-3 De Montfort Parade,  
Streatham High Road,  
Sales: 020 8487 3179  
Lettings: 020 8487 3180

Energy Rating: B We aim to make our particulars both accurate and reliable. However they are not guaranteed; nor do they form part of an offer or contract. If you require clarification on any points then please contact us, especially if you're traveling some distance to view. Please note that appliances and heating systems have not been tested and therefore no warranties can be given as to their good working order.