



ASHLAKE ROAD, SW16

£650,000

- Stunning detached period flat
- High spec finish throughout
- Two double bedrooms
- Two bathrooms
- Large private garden
- Energy rating: D







## ABOUT THE HOME

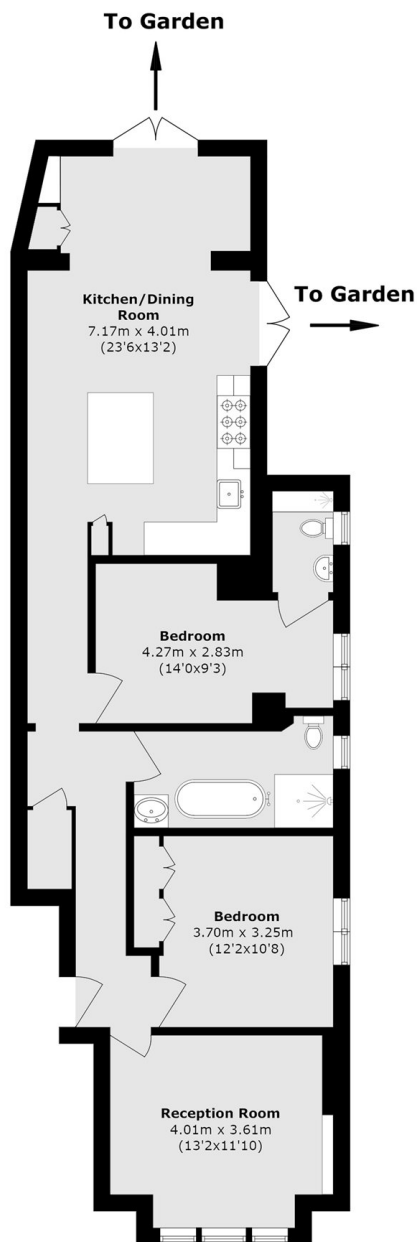
A beautiful and fully detached two bed / two bathroom period conversion flat, located on a quiet convenient road, just round the corner from Streatham train station and Tooting Bec Common. The property has been renovated to a high standard complete with a large open plan kitchen/diner and generous private garden with side access.

Ashlake Road is within close proximity to Streatham Common and Streatham train stations along with many shops, restaurants, leisure facilities and excellent bus links to and from the City.









Total area (approx.): 88.2 sq. m (949.3 sq. ft)

### JACKSONS STREATHAM

1-3 De Montfort Parade,  
Streatham High Road,  
Sales: 020 8487 3179  
Lettings: 020 8487 3180

Energy Rating: D We aim to make our particulars both accurate and reliable. However they are not guaranteed; nor do they form part of an offer or contract. If you require clarification on any points then please contact us, especially if you're traveling some distance to view. Please note that appliances and heating systems have not been tested and therefore no warranties can be given as to their good working order.