



## LEITHCOTE GARDENS, SW16

£800,000

- Four Bedrooms
- Two Bathrooms
- Off Street Parking
- Kitchen Diner
- Large Garden
- Rear Access to Private Land







## ABOUT THE HOME

A very well presented four bedroom family home on a sought after residential road in Streatham Hill.

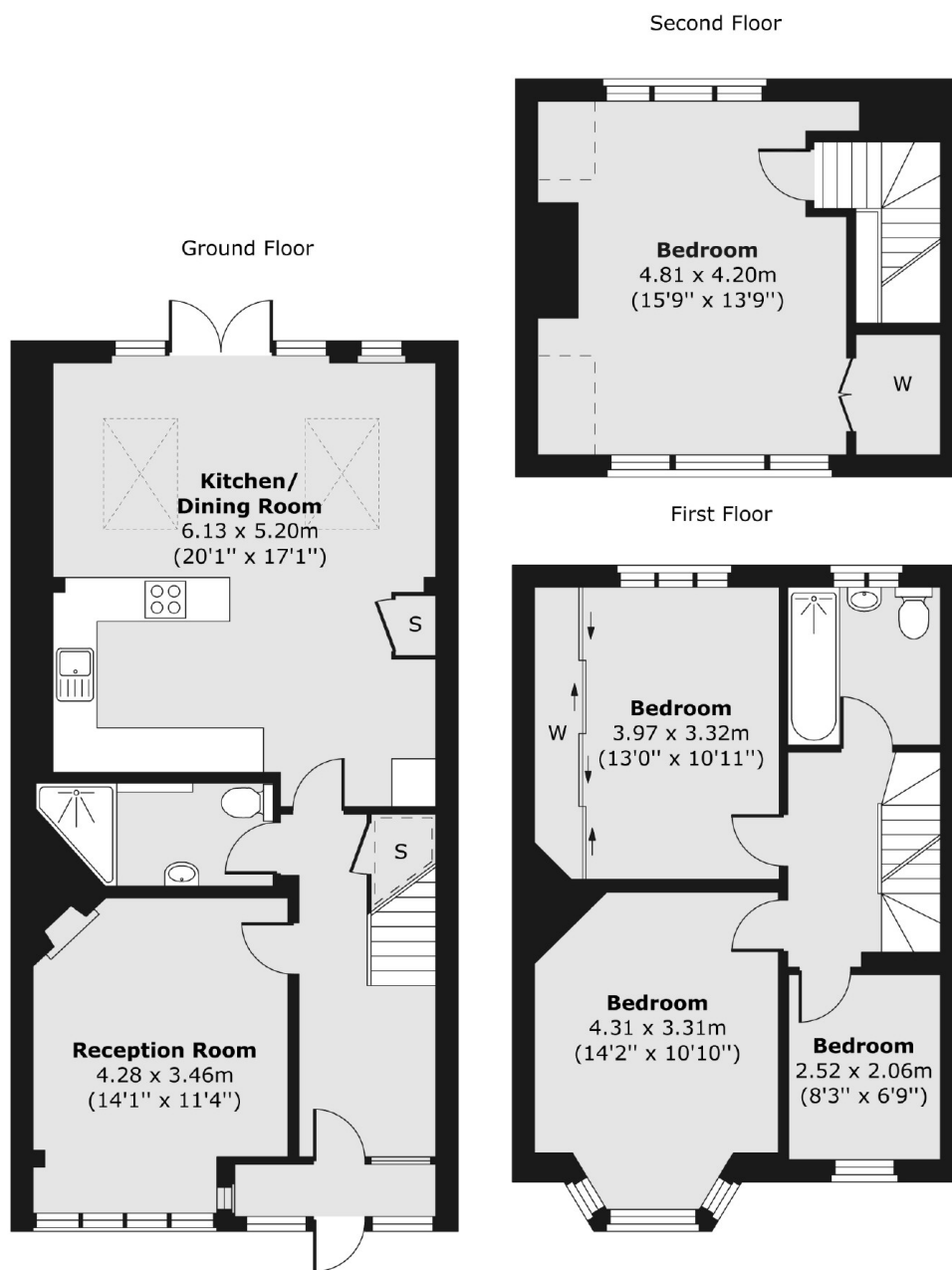
Leithcote Gardens is conveniently placed within close proximity to the bars, restaurants and amenities of Streatham High Road. Streatham Hill mainline station providing rail links to Clapham Junction via London Victoria and bus routes to the City are easily accessible, as are rail links at Streatham Station. The desirable Dunraven School is also nearby.











Total area (approx.) 131.53 sq. m (1,416 sq. ft)

### JACKSONS STREATHAM

1-3 De Montfort Parade,  
Streatham High Road,  
Sales: 020 8487 3179  
Lettings: 020 8487 3180

Energy Rating: D We aim to make our particulars both accurate and reliable. However they are not guaranteed; nor do they form part of an offer or contract. If you require clarification on any points then please contact us, especially if you're traveling some distance to view. Please note that appliances and heating systems have not been tested and therefore no warranties can be given as to their good working order.