



MOLYNEUX DRIVE, SW17

£290,000

- One Bedroom Flat
- Permit Parking
- Share Of Freehold
- Close To Tube
- EPC D
- Close To Common



1



1



1



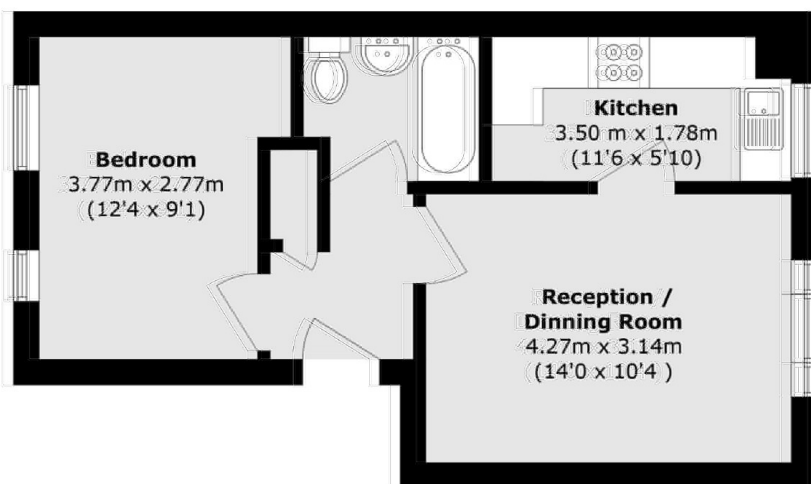
ABOUT THE HOME

A stunning one-bedroom apartment set within the sought-after Heritage Park development. Internally comprising a spacious sitting room with separate modern kitchen, family bathroom and finally a large double bedroom with ample space for wardrobes. The property is set within beautifully maintained grounds and ideally located just a short walk from Tooting Bec Underground Station.

Heritage Park is ideally positioned between Franciscan Road and Church Lane, just moments from Tooting Bec Common and Tooting Bec Underground Station. The vibrant array of shops, restaurants, bars, and cafés in nearby Balham are also within easy reach







Total area (approx.): 38.3 sq.m (412.3 sq.ft)

JACKSONS TOOTING

3 Upper Tooting Road, London,

SW17 7TS

Sales: 020 8487 3175

Lettings: 020 8487 3176

Energy Rating: We aim to make our particulars both accurate and reliable. However they are not guaranteed; nor do they form part of an offer or contract. If you require clarification on any points then please contact us, especially if you're traveling some distance to view. Please note that appliances and heating systems have not been tested and therefore no warranties can be given as to their good working order.