



ELMFIELD AVENUE, CR4

£625,000

- End of Terrace House
- 3 / 4 Double Bedrooms
- 2 Bathrooms + GF WC
- Large Sitting Room
- Dining Room into Kitchen
- Spacious Family Garden





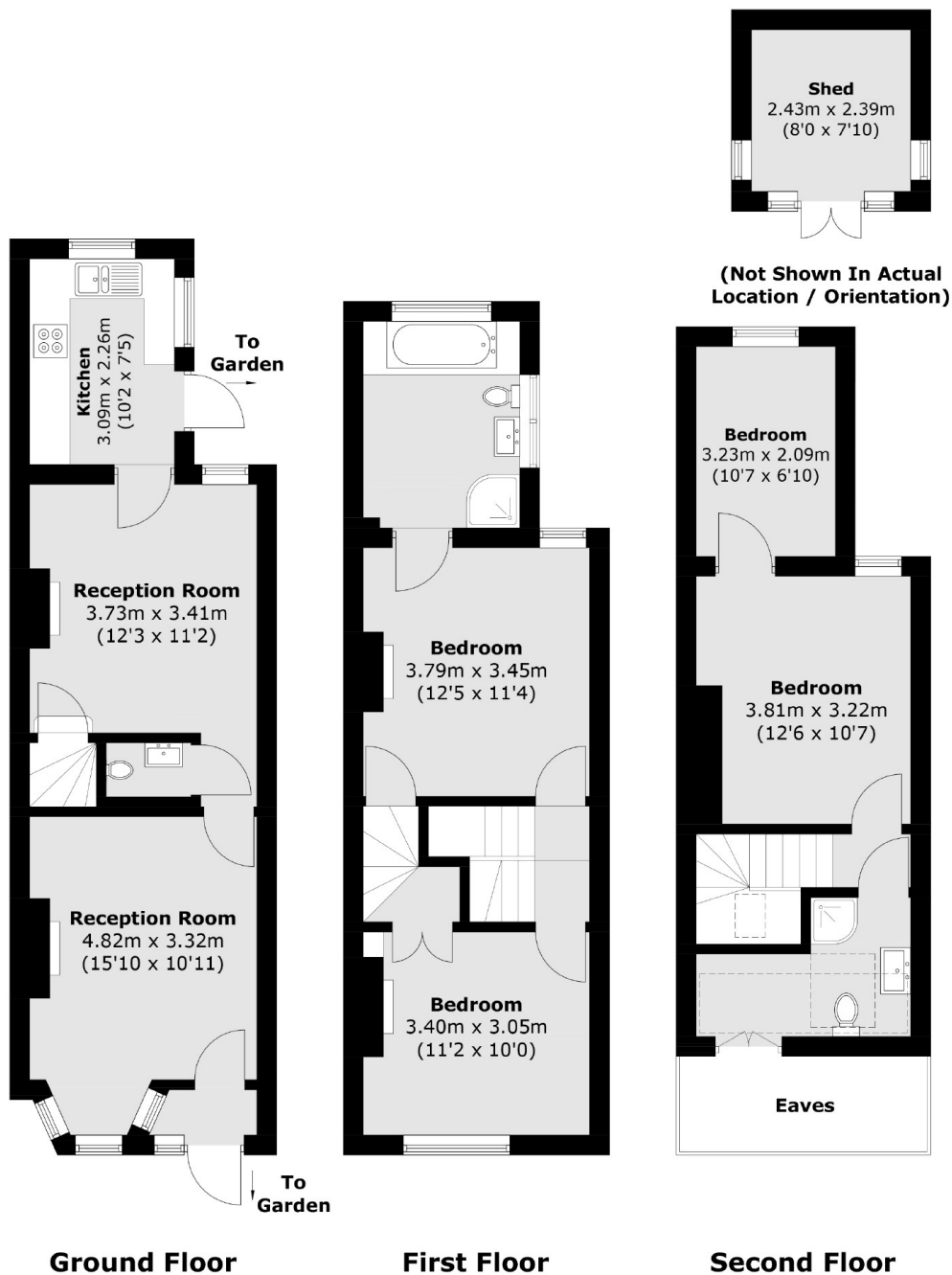
ABOUT THE HOME

This wonderfully presented three / four double bedroom, two-bathroom period end-of-terrace house has been tastefully modernised throughout, seamlessly blending contemporary style with charming original features. The property has recently benefitted from a loft extension, adding both space and versatility to this impressive home. Offering approximately 1,164 sq ft of well-proportioned living space, the ground floor features an inviting living room with a striking period fireplace, a separate dining room, and a modern galley-style kitchen. From here, doors open onto a generous family garden complete with side access and potential for further extension, subject to planning.

Situated on Elmfield Avenue, a quiet and sought-after cul-de-sac, within close proximity to excellent nurseries and schools, with the open green spaces of Figges Marsh on your doorstep. Transport links are superb, with Mitcham Eastfields Station (0.5 miles) offering quick connections into central London, alongside several bus routes to Tooting Broadway and the Northern Line. This is a charming period home that perfectly combines traditional character with modern living ideal for families and professionals alike.







Total area (approx.): 108.2 sq. m (1,164.6 sq. ft)
(Excluding Eaves)
Shed : 5.9 sq. m (63.5 sq. ft)

JACKSONS TOOTING

3 Upper Tooting Road, London,
SW17 7TS
Sales: 020 8487 3175
Lettings: 020 8487 3176

Energy Rating: We aim to make our particulars both accurate and reliable. However they are not guaranteed; nor do they form part of an offer or contract. If you require clarification on any points then please contact us, especially if you're traveling some distance to view. Please note that appliances and heating systems have not been tested and therefore no warranties can be given as to their good working order.