



STAPLETON ROAD, SW17

£675,000

- Victorian Garden Maisonette
- Ground Floor
- 2 Double Bedrooms
- Large Sitting Room
- Spacious Dining Room
- Excellent Location





ABOUT THE HOME

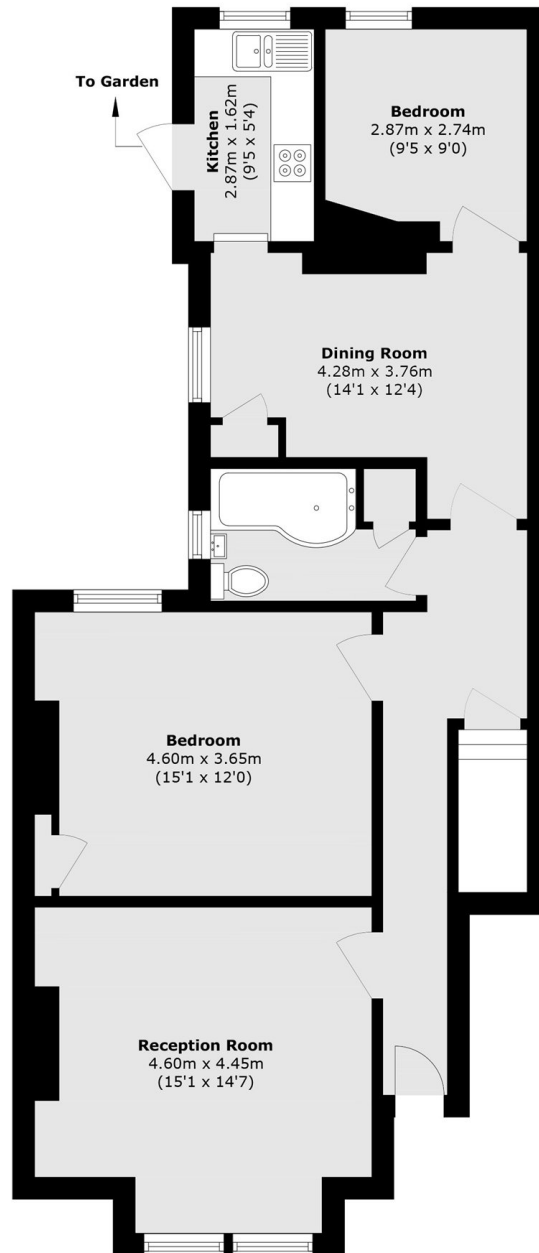
****Offers in Excess Of £675,000****

A stunning Victorian ground floor garden maisonette. Presented in immaculate condition throughout by the current owners. The property is larger than average, internally amassing an impressive 880sqft. The layout comprises; A generous sitting room with period fireplace, bespoke alcove storage units and sash windows. Two generous double bedrooms with the principal bedroom being a generous size. Ample under-stair storage is easily accessed, located along the hallway. A stylish family bathroom that has recently been renovated. Finally there is a spacious dining room with a separate well appointed kitchen, ideal for entertaining which leads out to a generous private rear garden.

Stapleton Road is one of Tooting Bec most sought after enclave roads due to its close proximity to Tooting Bec Northern line tube station. Being within moments of Tooting Common. Balham is a short stroll north and the popular café culture, bars, restaurants and gastro pubs as well as Tooting Broadway Market are a short walk south of this wonderful property.







Total area (approx.): 81.8 sq. m (880.4 sq. ft)

JACKSONS TOOTING

3 Upper Tooting Road, London,
SW17 7TS

Sales: 020 8487 3175

Lettings: 020 8487 3176

Energy Rating: We aim to make our particulars both accurate and reliable. However they are not guaranteed; nor do they form part of an offer or contract. If you require clarification on any points then please contact us, especially if you're traveling some distance to view. Please note that appliances and heating systems have not been tested and therefore no warranties can be given as to their good working order.