



HENRY DOULTON DRIVE, SW17

£575,000

- Freehold House
- Two Double Bedrooms
- Spacious Lounge
- Modern Kitchen
- Stylish Bathroom
- Residents Parking





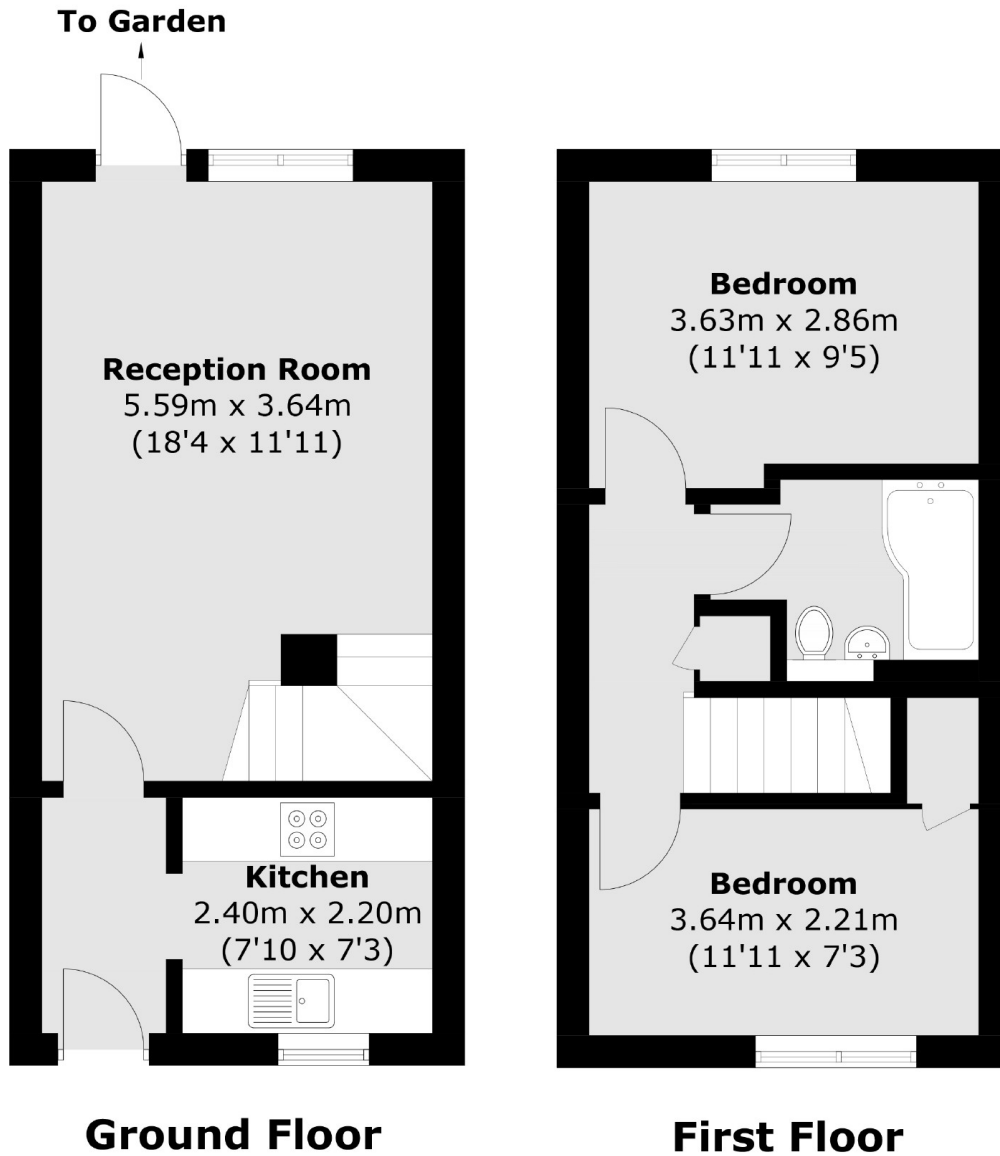
ABOUT THE HOME

A wonderfully presented two double bedroom, freehold terrace house. Located in the highly sought after Heritage Park Development. Internally the property comprises; A generous lounge with separate modern kitchen and doors leading out onto the rear garden. Returning inside and to the first floor, you will find 2 spacious and well proportioned double bedrooms, a stylishly appointed bathroom and finally loft access to the large storage space in the loft void. The property additionally benefits from residents parking with visitor spaces also available.

Heritage Park is a well kept modern development with landscaped gardens and on site caretaker. Located opposite Tooting Bec Common and within short walking distance of Tooting Bec Northern Line tube station. Balham is within short walking distance as well as a number of highly sought after nurseries, Ofsted 'Outstanding' primary and secondary schools, all within close proximity.







Total area (approx.): 58.0 sq. m (624.3 sq. ft)

JACKSONS TOOTING

3 Upper Tooting Road, London,
SW17 7TS
Sales: 020 8487 3175
Lettings: 020 8487 3176

Energy Rating: C We aim to make our particulars both accurate and reliable. However they are not guaranteed; nor do they form part of an offer or contract. If you require clarification on any points then please contact us, especially if you're traveling some distance to view. Please note that appliances and heating systems have not been tested and therefore no warranties can be given as to their good working order.