



LISLE CLOSE, SW17

£450,000

- Two Double Bedrooms
- Share of Freehold
- Off Street Parking
- Ground Floor Flat
- Tooting Bec Common
- EPC Rating C





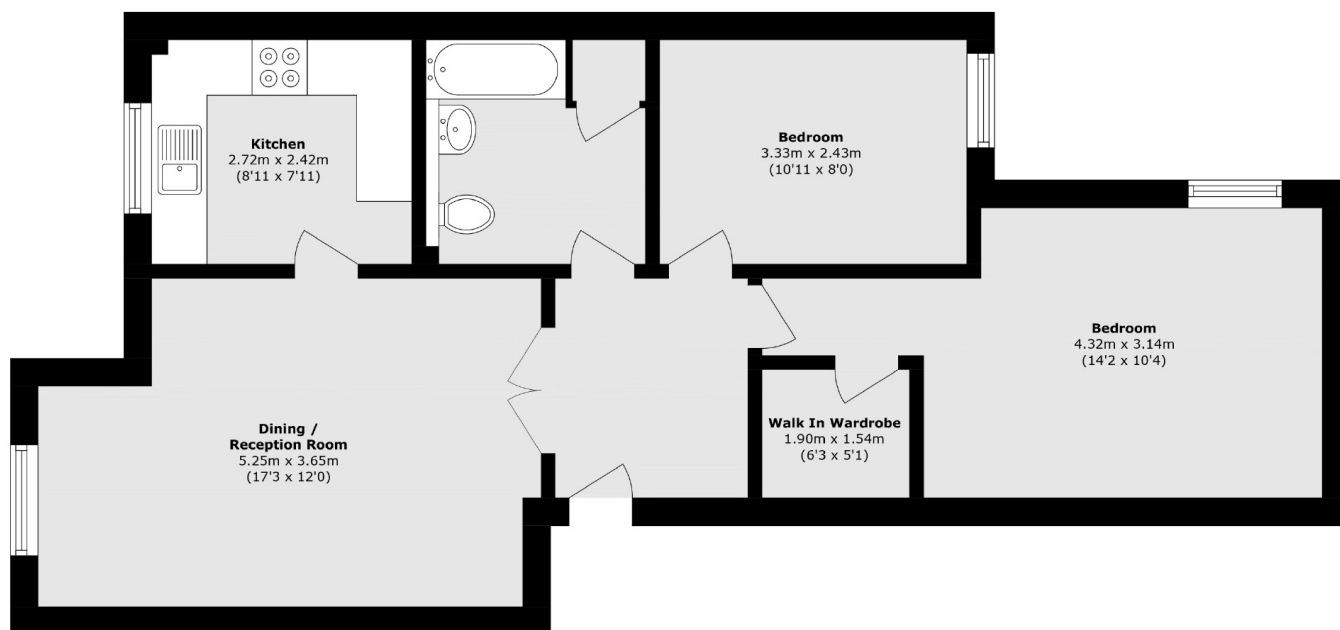
## ABOUT THE HOME

A spacious and recently renovated two-bedroom ground floor flat, featuring modern interiors and a walk-in wardrobe. The property offers a generously sized master bedroom, along with a versatile second bedroom that can be used as a guest room, office, or nursery.

Lisle Close forms part of the popular Heritage Park Development, which is a sought after modern development in Tooting Bec. Situated close to the amenities of both Balham and Tooting Bec with the open spaces of Tooting Bec Common and the Underground Station close by. Heritage Park also benefits from well kept communal areas, communal bike storage, an on site caretaker and security.







Total area (approx.): 63.6 sq. m (684.6 sq. ft)

### JACKSONS TOOTING

3 Upper Tooting Road, London,  
SW17 7TS  
Sales: 020 8487 3175  
Lettings: 020 8487 3176

Energy Rating: We aim to make our particulars both accurate and reliable. However they are not guaranteed; nor do they form part of an offer or contract. If you require clarification on any points then please contact us, especially if you're traveling some distance to view. Please note that appliances and heating systems have not been tested and therefore no warranties can be given as to their good working order.