



## Elderfield Place, SW17

**£3,500 PCM**

This four bedroom terraced house has been recently renovated. The property includes three bathrooms, a private garden and off-street parking making it perfect for a family or professional sharers.

- Townhouse
- Four Double Bedrooms
- Three Bathrooms
- Driveway
- Private Garden
- Tooting Bec

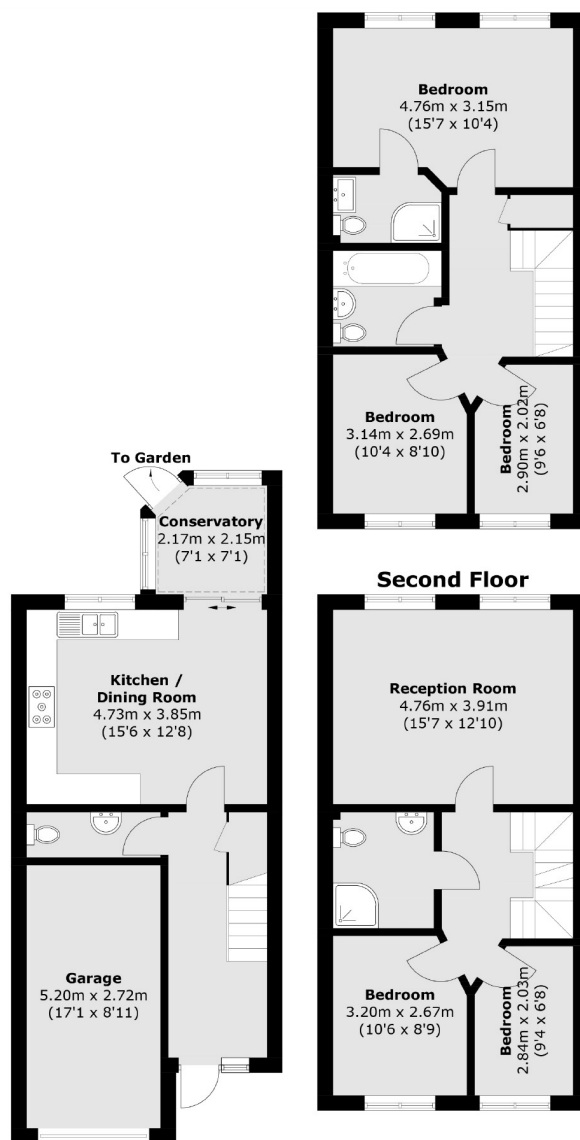
For further information on the costs associated with renting a property, please pop into our office or visit our website.



Elderfield Place is part of the popular Heritage Park development which overlooks Tooting Bec Common and is close to Tooting Bec underground station. All the shops, restaurants, cafes and bars of Balham are also nearby.







#### Ground Floor

#### First Floor

Total area (approx.): 127.6 sq. m (1,373.4 sq. ft)

Garage: 13.8 sq. m (148.5 sq. ft)

Jacksons Tooting  
26 Tooting Bec Road  
London  
SW17 8BD  
020 8767 0522  
tooting.lettings@jacksonsestateagents.com

Energy Rating: We aim to make our particulars both accurate and reliable. However they are not guaranteed; nor do they form part of an offer or contract. If you require clarification on any points then please contact us, especially if you're traveling some distance to view. Please note that appliances and heating systems have not been tested and therefore no warranties can be given as to their good working order.