



FRANCISCAN ROAD, SW17

£700,000

- Three Double Bedrooms
- Private Garden
- Close to Tooting Common
- Share of Freehold
- Beautifully Presented
- Tooting Bec





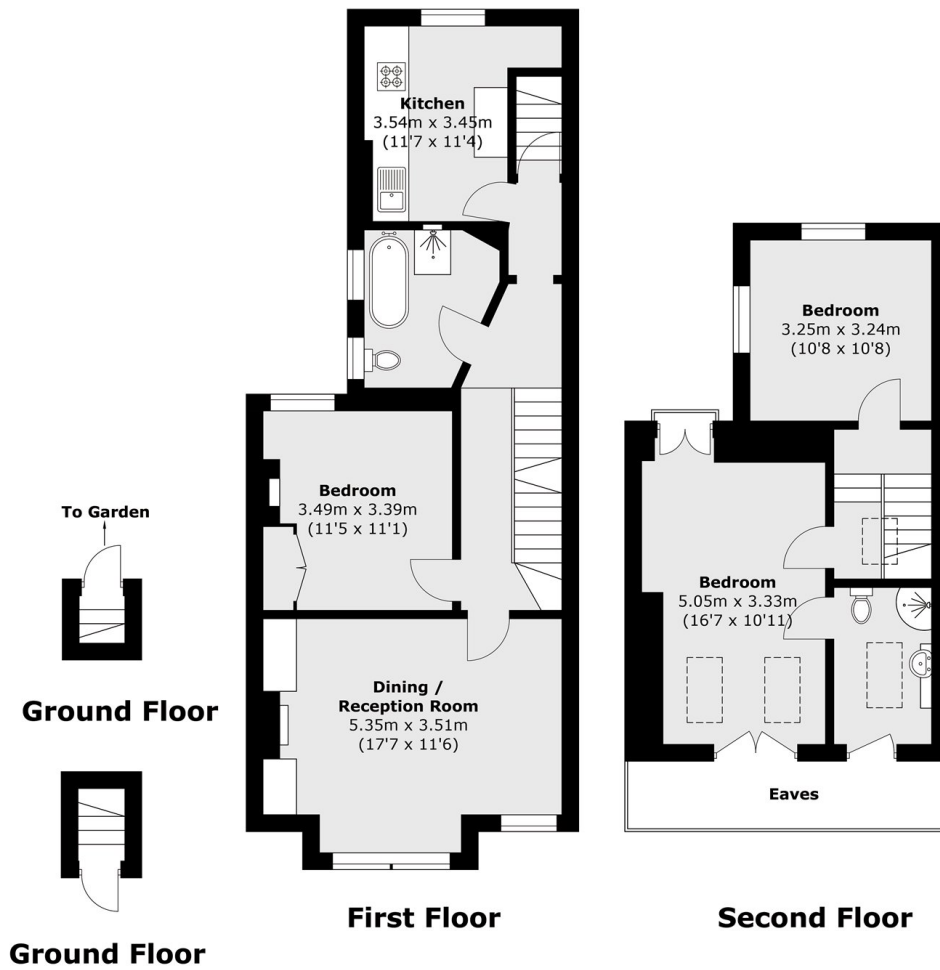
ABOUT THE HOME

A beautifully presented split level period conversion. It comprises of a large living space, modern kitchen, three well-proportioned bedrooms and two modern bathrooms. It also has the added benefit of a private garden.

Franciscan Road is one of the most sought after locations in Tooting Bec. The property is ideally situated for Tooting Bec Underground station. The green open spaces of both Tooting Bec Common and Wandsworth Common are easily accessible as are the shops, bars and restaurants that both of these areas have to offer.







Total area (approx.): 107.3 sq. m (1,154.9 sq. ft)
(Excluding Eaves)

JACKSONS TOOTING

3 Upper Tooting Road, London,
SW17 7TS
Sales: 020 8487 3175
Lettings: 020 8487 3176

Energy Rating: We aim to make our particulars both accurate and reliable. However they are not guaranteed; nor do they form part of an offer or contract. If you require clarification on any points then please contact us, especially if you're traveling some distance to view. Please note that appliances and heating systems have not been tested and therefore no warranties can be given as to their good working order.