



FRANCISCAN ROAD, SW17

£600,000

- Victorian Maisonette
- Ground Floor with Garden
- 2 Double Bedrooms
- Reception Room
- Kitchen Dining Room
- West Facing Garden





ABOUT THE HOME

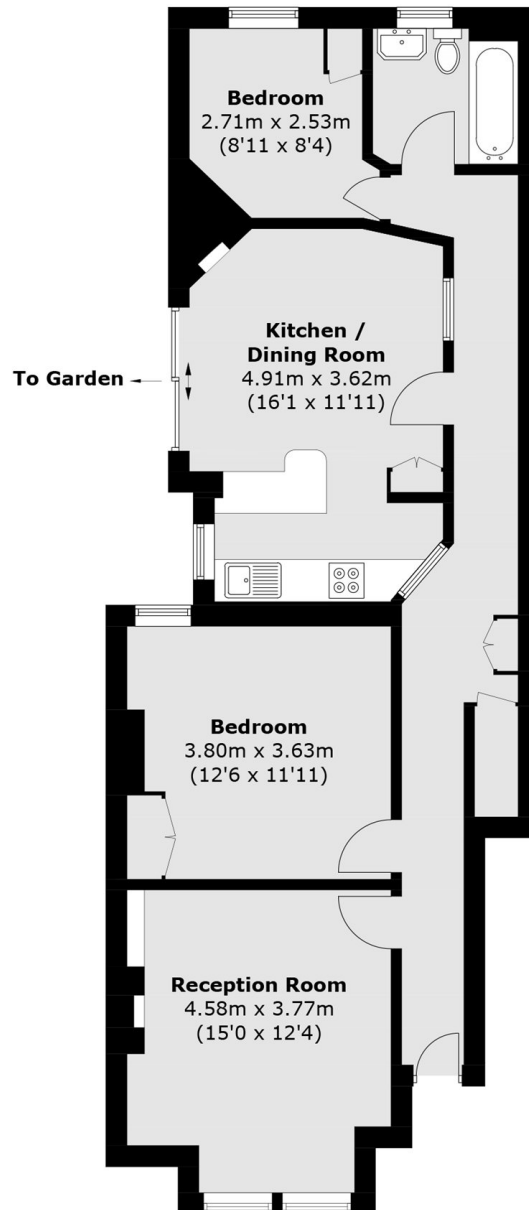
**** CHAIN FREE ****

A very well-presented two double bedroom Victorian garden maisonette in the heart of Tooting Bec, just moments from the Underground and the open green spaces of Tooting Bec Common. Offering 834 sq ft of well-balanced accommodation, this ground floor home combines period character with modern living. The property benefits from a private entrance and front garden in addition to the rear garden. The bright and spacious reception room features original floorboards, double-glazed sash windows and plantation shutters. There are two double bedrooms, including a generous principal bedroom with an original fireplace, original floorboards and fitted wardrobes. To the rear, a stylish open-plan kitchen/dining space with integrated appliances opens directly onto a private west-facing garden ideal for entertaining and enjoying afternoon and evening sun. A well-appointed family bathroom completes the accommodation.

Franciscan Road is one of Tooting Bec's most sought-after residential streets, superbly located for Tooting Bec Underground station, Tooting Bec Common, Wandsworth Common and an excellent selection of shops, bars and restaurants.







Total area (approx.): 77.5 sq. m (834.2 sq. ft)

JACKSONS TOOTING

3 Upper Tooting Road, London,

SW17 7TS

Sales: 020 8487 3175

Lettings: 020 8487 3176

Energy Rating: We aim to make our particulars both accurate and reliable. However they are not guaranteed; nor do they form part of an offer or contract. If you require clarification on any points then please contact us, especially if you're traveling some distance to view. Please note that appliances and heating systems have not been tested and therefore no warranties can be given as to their good working order.