



JUNIPER DRIVE, SW18

£400,000

- Riverside development
- No Onward Chain
- Open plan kitchen/living
- Communal gardens
- Allocated parking space
- Energy rating: B



1



1



1



ABOUT THE HOME

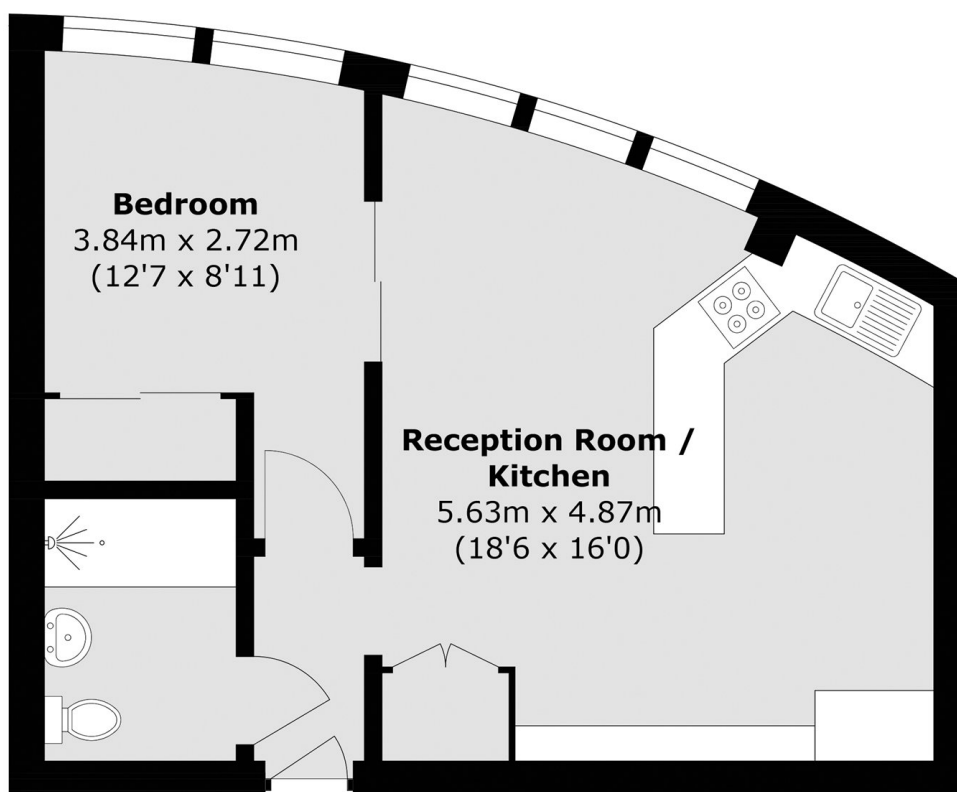
A very well appointed, one double bedroom apartment set within the ever popular Battersea Reach development.

The property is presented in excellent condition and features a spacious entrance hall, a modern kitchen with breakfast bar that opens onto a bright reception/ dining area, ideal for entertaining. There is a contemporary bathroom and a double bedroom with generous built-in wardrobes. Additional benefits include well-maintained communal areas and gardens, along with a secure, allocated parking space.

Battersea Reach is a desirable riverside development which is ideally positioned for easy access to Central London via Wandsworth Town Station and Clapham Junction. Whilst being a short distance from the popular shops, bars and restaurants of Wandsworth Town and Northcote Road, it is also just across the bridge from Fulham. The Riverbus stop at Plantation Wharf offers a fast and convenient commute into the City and out to Canary Wharf.







Total area (approx.): 40.0 sq. m (430.6 sq. ft)

JACKSONS WANDSWORTH

507 Old York Road, London,
SW18 1TF
Sales: 020 8875 8890
Lettings: 020 8875 8899

Energy Rating: B We aim to make our particulars both accurate and reliable. However they are not guaranteed; nor do they form part of an offer or contract. If you require clarification on any points then please contact us, especially if you're traveling some distance to view. Please note that appliances and heating systems have not been tested and therefore no warranties can be given as to their good working order.