

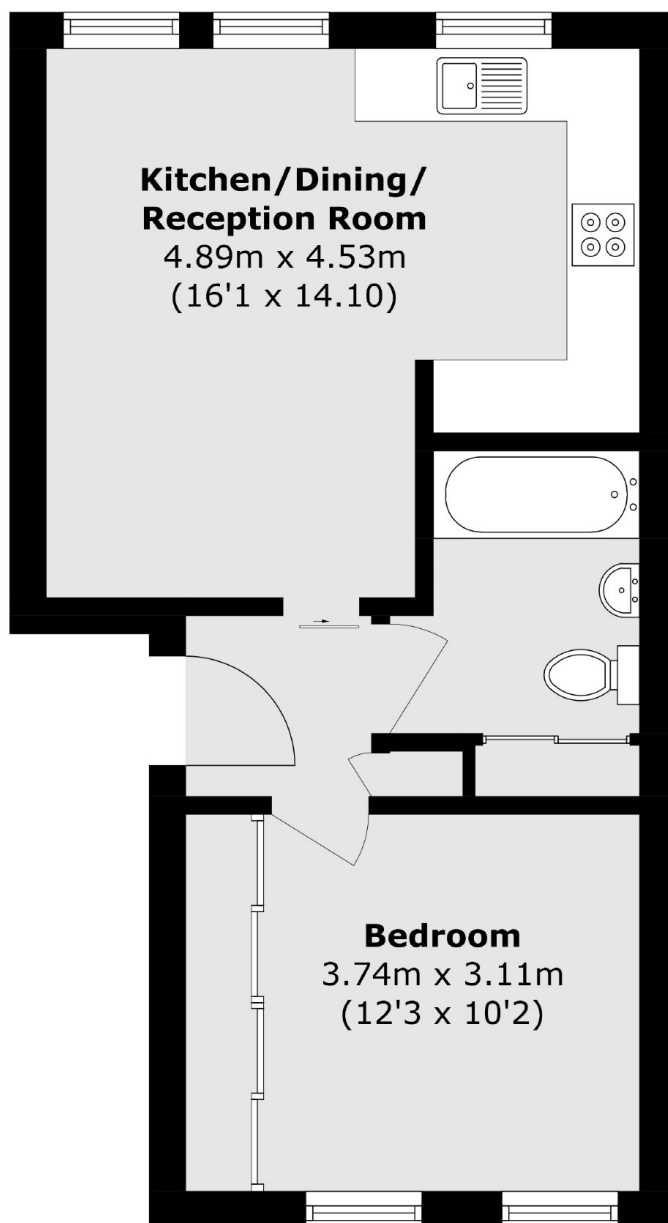


BLOOMSBURY PLACE, SW18

£2,250 PCM

- One double bedroom
- Gated development
- Open-planned reception
- Private parking
- Furnished
- Energy rating: C





Total area (approx.): 40.4 sq. m (434.8 sq. ft)

JACKSONS WANDSWORTH

507 Old York Road, London,
SW18 1TF
Sales: 020 8875 8890
Lettings: 020 8875 8899

Energy Rating: C We aim to make our particulars both accurate and reliable. However they are not guaranteed; nor do they form part of an offer or contract. If you require clarification on any points then please contact us, especially if you're traveling some distance to view. Please note that appliances and heating systems have not been tested and therefore no warranties can be given as to their good working order.