



FIELDHOUSE ROAD, SW12

£925,000

- Four Bedrooms
- Large Kitchen/Dining Room
- Share Of Freehold
- Private Garden
- Hyde Farm Location
- EPC Rating : C



4



2



2



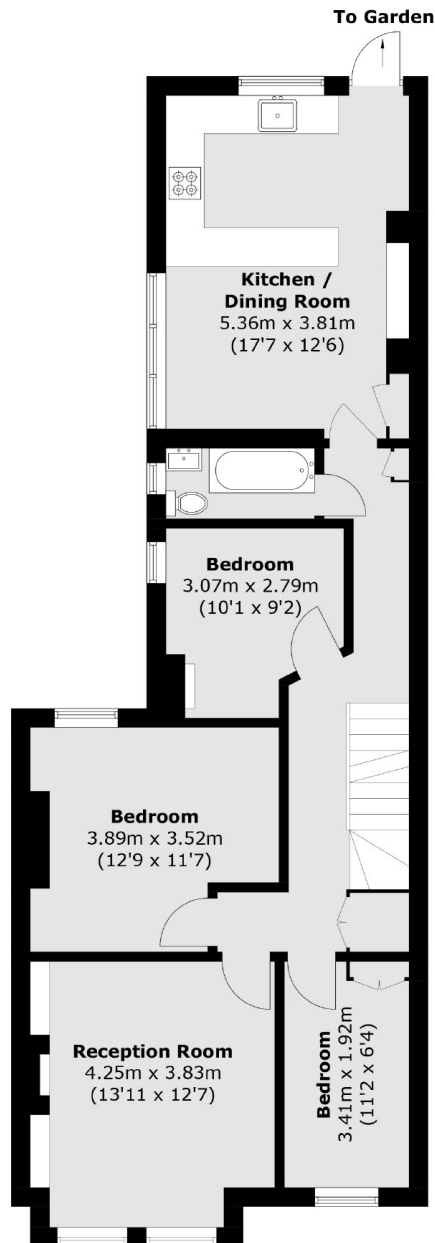
ABOUT THE HOME

A well presented four bed two bathroom split level maisonette with a private garden, measuring just shy of 1200 square feet. A prime location for Tooting Bec Common and two Ofsted outstanding primary schools.

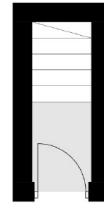
Located on Fieldhouse Road in the Hyde Farm area it is well situated for easy access to Balham. The north side of Tooting Bec Common lies just moments away at the end of the road and the shops, bars, restaurants and supermarkets local to the area are within easy reach.



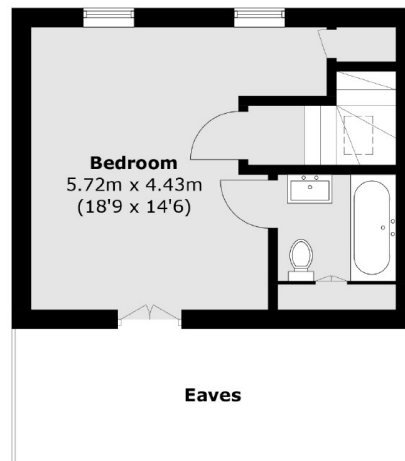




First Floor



Ground Floor



Second Floor

Total area (approx.): 110.2 sq. m (1,186.1 sq. ft)
(Excluding Eaves)

JACKSONS BALHAM

8-11 Balham Station Road,
London, SW12 9SG
Sales: 020 8675 6555
Lettings: 020 8675 6565

Energy Rating: C We aim to make our particulars both accurate and reliable. However they are not guaranteed; nor do they form part of an offer or contract. If you require clarification on any points then please contact us, especially if you're traveling some distance to view. Please note that appliances and heating systems have not been tested and therefore no warranties can be given as to their good working order.