



RITHERDON ROAD, SW17

£525,000

- Two Double Bedrooms
- Share of Freehold
- Communal Garden
- Heaver Estate
- Close to Tooting Common
- Energy Rating : C





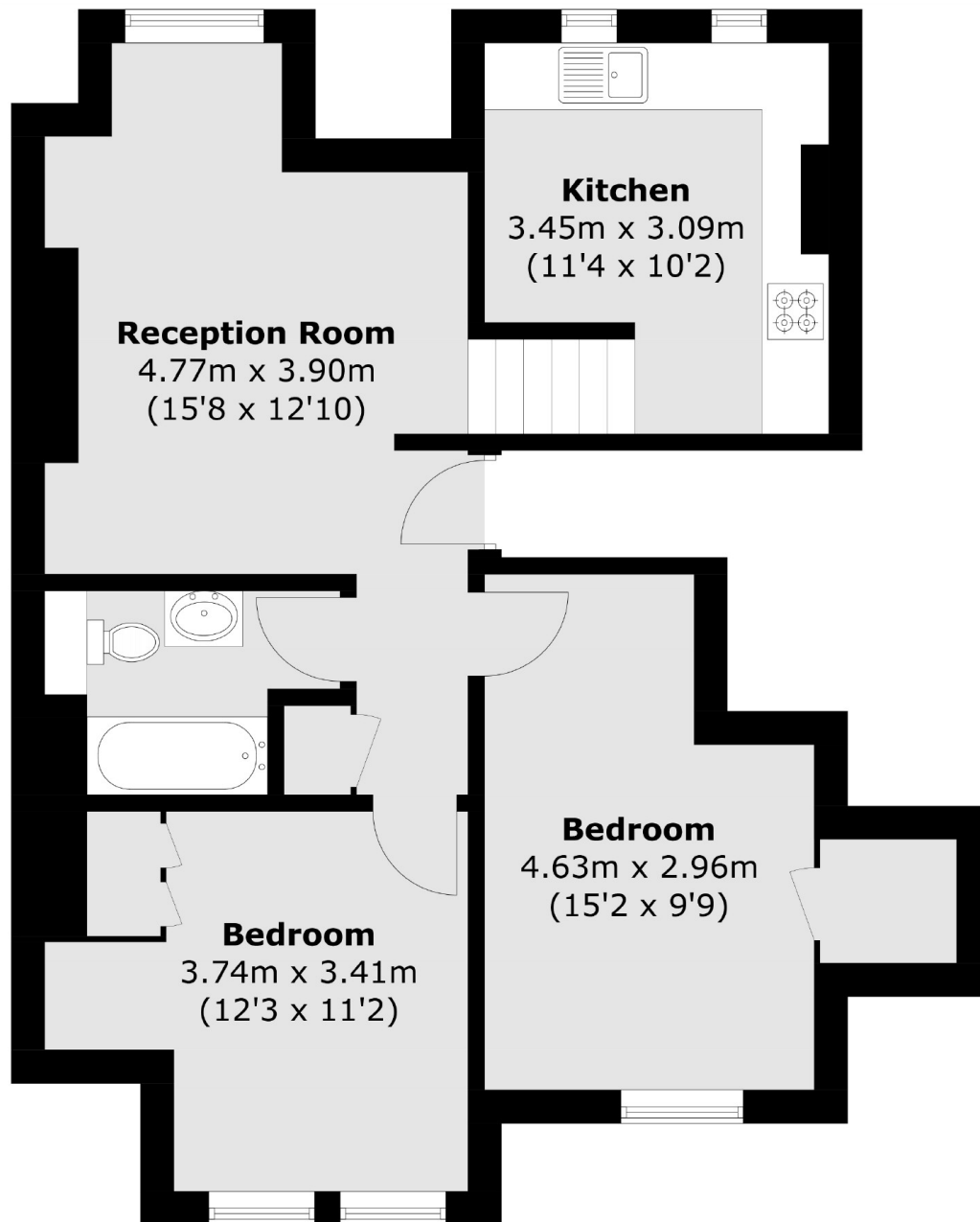
ABOUT THE HOME

Set in a lovely period building in the popular Heaver Estate is this very well presented two bedroom top floor flat. This property features a modern kitchen and bathroom, great size reception room, and access to a garden. It also benefits from being share of the freehold and has extensive loft storage space.

Ritherdon Road is ideally situated in the ever popular Heaver Estate which is within easy reach of both Balham and Tooting Bec stations. It lies just moments from the green spaces of Tooting Common and is only a short distance from the bars, restaurants and shops that Balham has to offer.







Second Floor

Total area (approx.): 60.7 sq. m (653.4 sq. ft)

JACKSONS BALHAM

8-11 Balham Station Road,
London, SW12 9SG
Sales: 020 8675 6555
Lettings: 020 8675 6565

Energy Rating: C We aim to make our particulars both accurate and reliable. However they are not guaranteed; nor do they form part of an offer or contract. If you require clarification on any points then please contact us, especially if you're traveling some distance to view. Please note that appliances and heating systems have not been tested and therefore no warranties can be given as to their good working order.