



PENTNEY ROAD, SW12

£495,000

- Ground Floor
- Private Entrance

- Two Bedrooms
- Private Garden





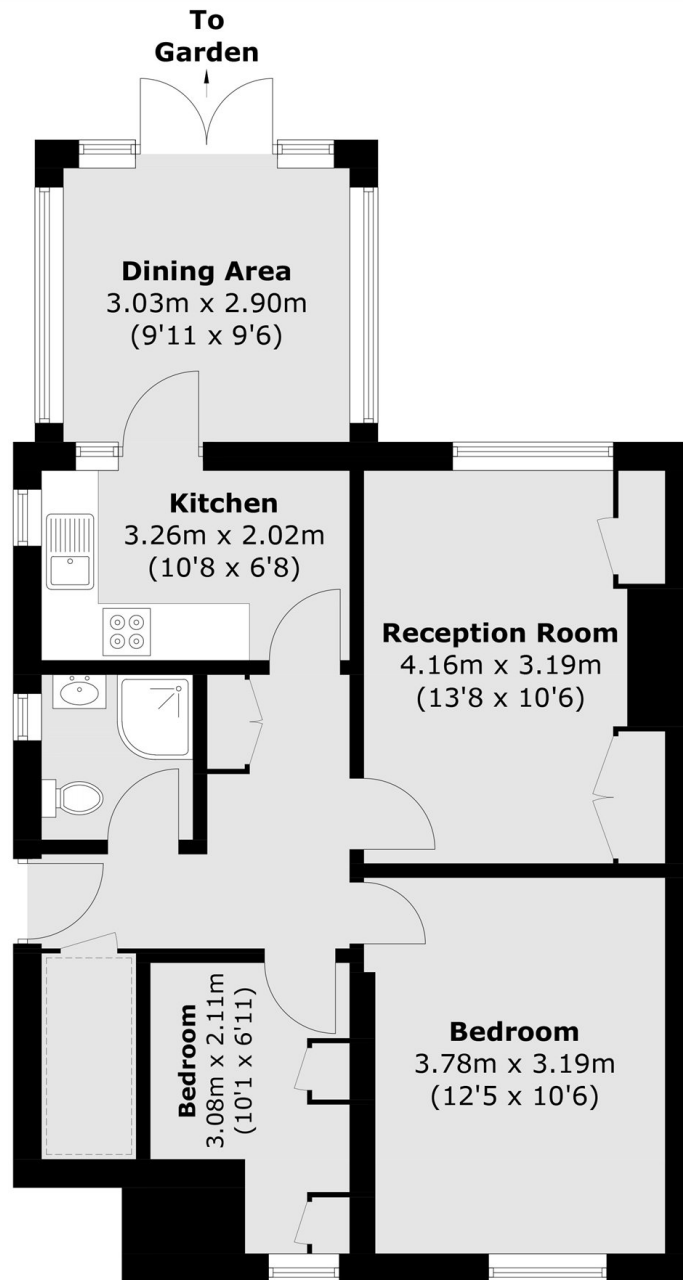
ABOUT THE HOME

A two bedroom ground floor purpose built maisonette on a highly desirable residential road in Balham. This property benefits from a private garden and is chain free.

Situated in the ever popular Hyde Farm Estate, Pentney Road is one of Balham's most popular roads, superbly located within close proximity of Henry Cavendish Primary School, the green spaces of Tooting Bec Common and the wide ranging amenities Balham has to offer.







Ground Floor

Total area (approx.): 63.6 sq. m (684.6 sq. ft)

JACKSONS BALHAM

8-11 Balham Station Road,
London, SW12 9SG
Sales: 020 8675 6555
Lettings: 020 8675 6565

Energy Rating: We aim to make our particulars both accurate and reliable. However they are not guaranteed; nor do they form part of an offer or contract. If you require clarification on any points then please contact us, especially if you're traveling some distance to view. Please note that appliances and heating systems have not been tested and therefore no warranties can be given as to their good working order.