



MANVILLE ROAD, SW17

£350,000

- Heaver Estate
- Share of Freehold
- Top Floor

- One Double Bedroom
- Well Maintained
- Energy Rating: D



1



1



1



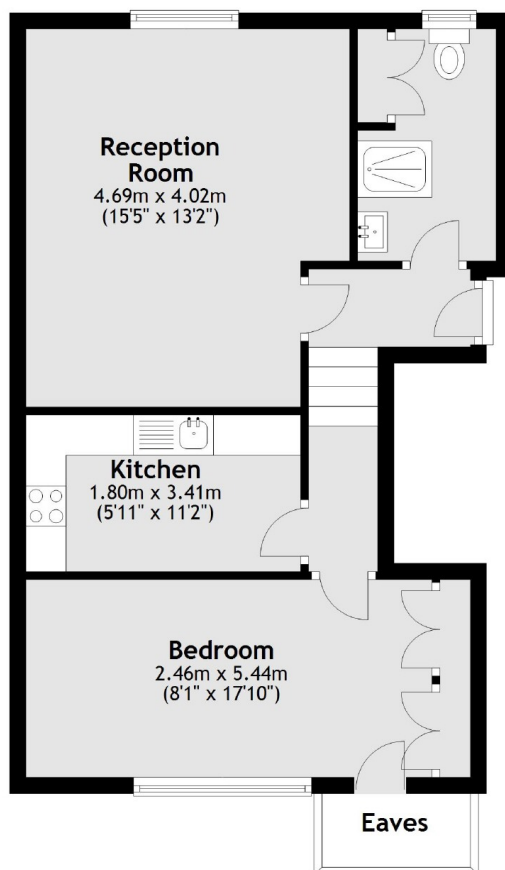
ABOUT THE HOME

A bright well maintained apartment on the top floor of an attractive double fronted period building in the popular Heaver Estate. The property comprises a bright reception/dining room, good sized double bedroom which includes fitted wardrobes and eaves storage, a smart kitchen and a contemporary bathroom with walk in shower.

Manville Road is very well located within the much sought after Heaver Estate conservation area. There is a variety of shops, bars and restaurants located within easy reach as well as the open green spaces of Tooting Bec Common. There are also excellent transport links into central London provided by the Northern Line tube as well as overground services conveniently located at Balham and Tooting Bec stations.





Second Floor

Total area: approx. 48.9 sq. metres (526.0 sq. feet)

JACKSONS BALHAM

8-11 Balham Station Road,
London, SW12 9SG
Sales: 020 8675 6555
Lettings: 020 8675 6565

Energy Rating: D We aim to make our particulars both accurate and reliable. However they are not guaranteed; nor do they form part of an offer or contract. If you require clarification on any points then please contact us, especially if you're traveling some distance to view. Please note that appliances and heating systems have not been tested and therefore no warranties can be given as to their good working order.