

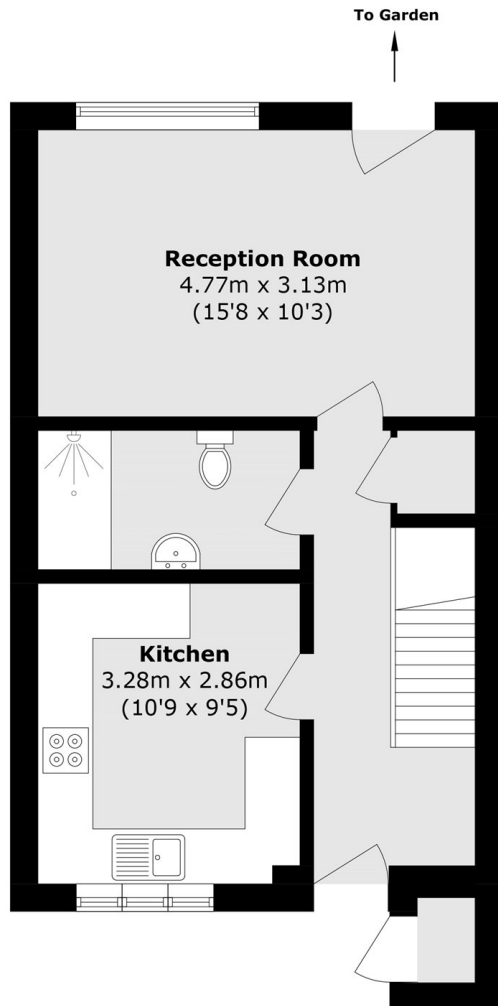


AINSLIE WALK, SW12

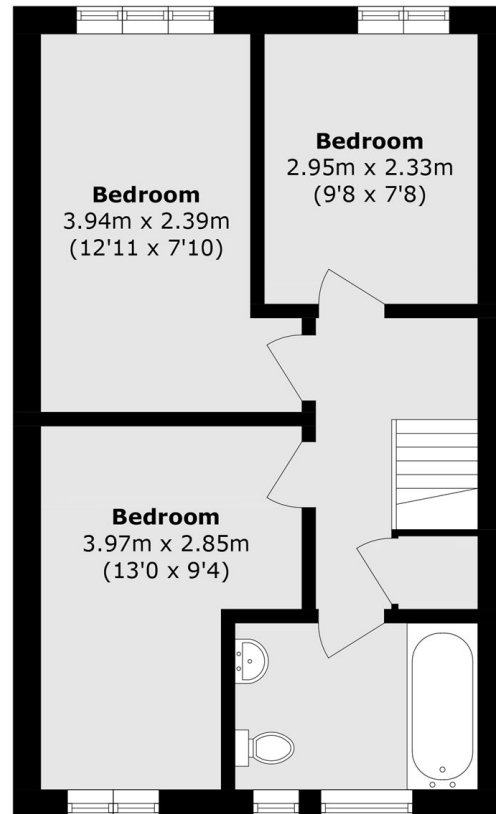
£3,000 PCM

- Terraced house
- Reception room
- Modern kitchen
- Three double bedrooms
- Two bathrooms
- Energy rating: C





**Ground Floor**



**First Floor**

Total area (approx.): 78.6 sq. m (846 sq. ft)  
External Storage (approx.): 0.8 sq. m (8.6 sq. ft)

#### **JACKSONS BALHAM**

8-11 Balham Station Road,  
London, SW12 9SG  
Sales: 020 8675 6555  
Lettings: 020 8675 6565

Energy Rating: C We aim to make our particulars both accurate and reliable. However they are not guaranteed; nor do they form part of an offer or contract. If you require clarification on any points then please contact us, especially if you're traveling some distance to view. Please note that appliances and heating systems have not been tested and therefore no warranties can be given as to their good working order.