



BURNBURY ROAD, SW12

£3,400 PCM

- Over 1000 sqft
- Kitchen breakfast room
- Two bathrooms
- Private garden
- Hyde Farm Estate
- Energy rating: D



4



2



1



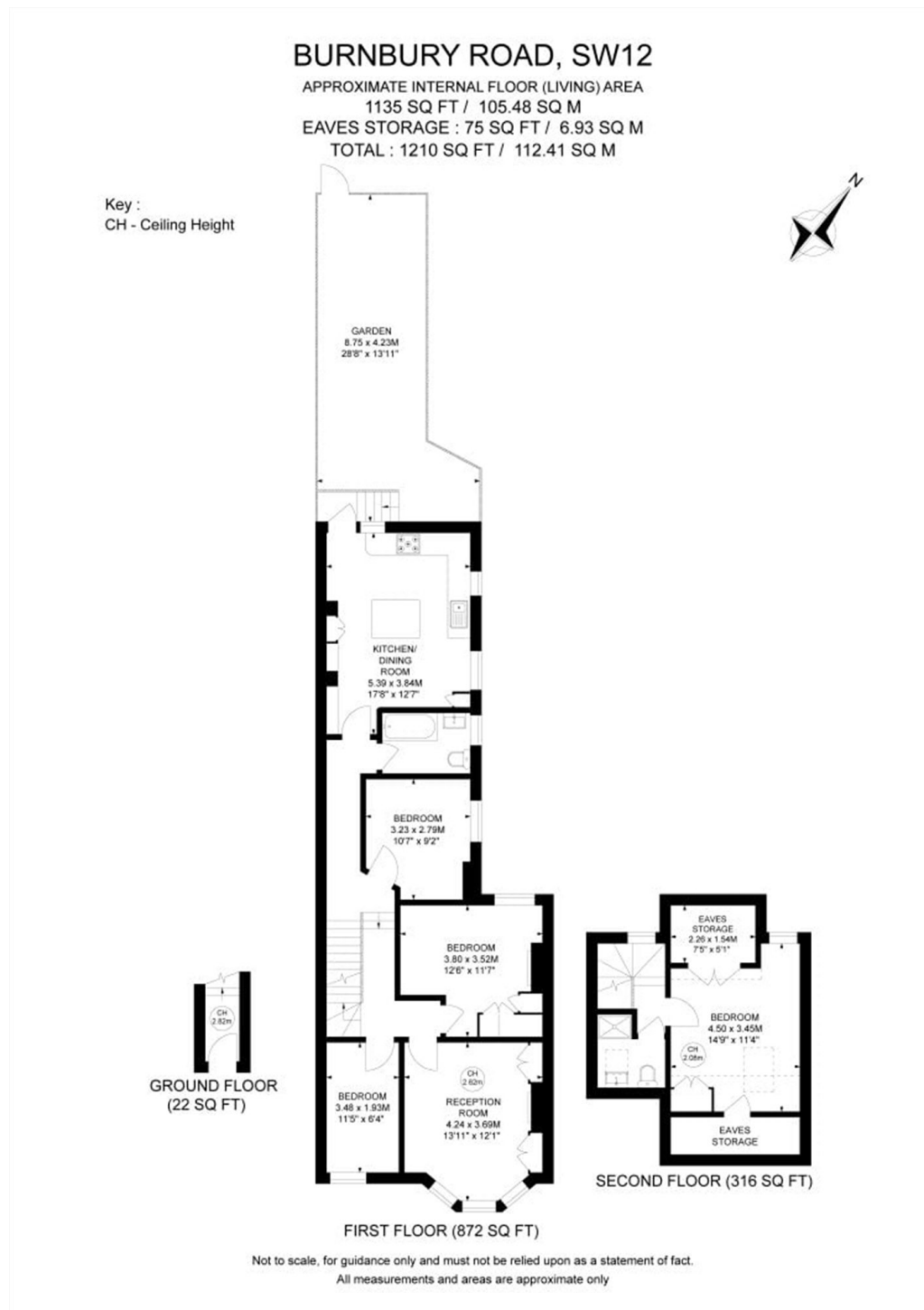
ABOUT THE HOME

Set over the first and second floors, this beautifully presented maisonette is ideal for a couple or a family. Comprising of four double bedrooms, two bathrooms, a kitchen breakfast room, large reception room and a private garden.

Located in Burnbury Road in the highly regarded Hyde Farm area of Balham this property is well situated for easy access to Balham mainline and underground stations.







JACKSONS BALHAM

8-11 Balham Station Road,
London, SW12 9SG
Sales: 020 8675 6555
Lettings: 020 8675 6565

Energy Rating: We aim to make our particulars both accurate and reliable. However they are not guaranteed; nor do they form part of an offer or contract. If you require clarification on any points then please contact us, especially if you're traveling some distance to view. Please note that appliances and heating systems have not been tested and therefore no warranties can be given as to their good working order.