



BOUNDARIES ROAD, SW12

£800,000

- Purpose built apartment
- Two double bedrooms
- Two bathrooms
- 1300 sqft
- Two parking spaces
- Energy Rating: B







## ABOUT THE HOME

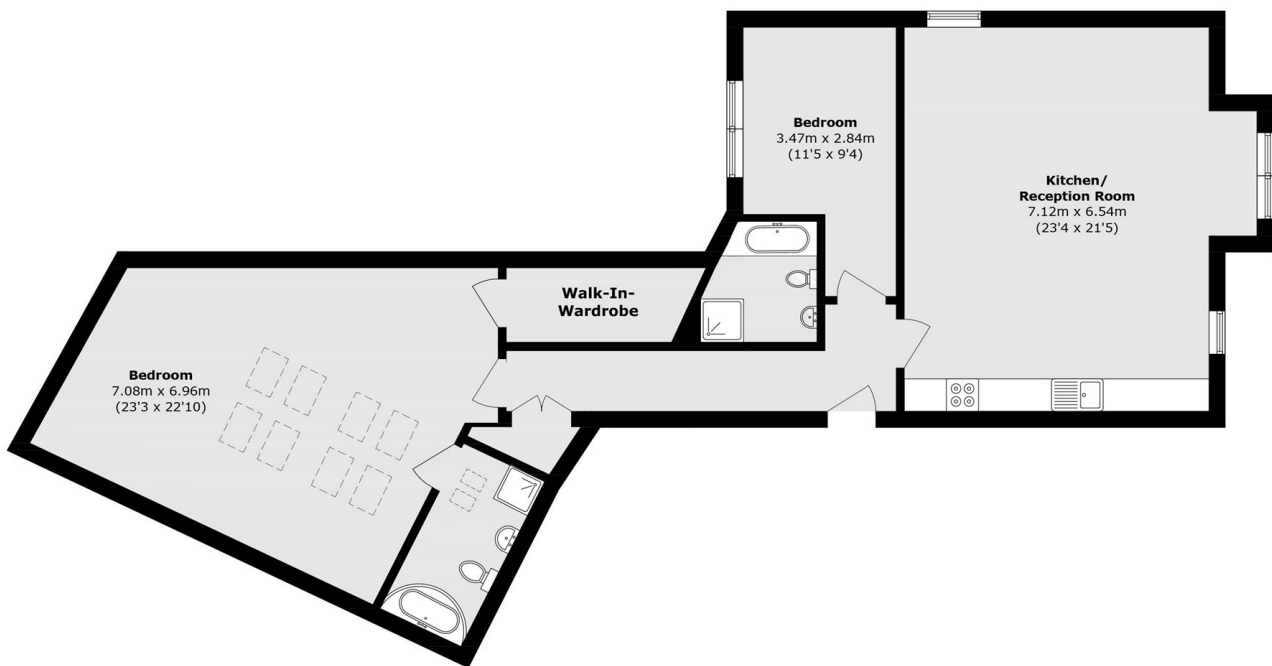
A truly spectacular apartment spanning 1,300sqft and situated moments from Balham Underground Station and the excellent local amenities.

This small development is located on Boundaries Road, a residential street in Central Balham, making it an ideal location for easy access to Balham mainline and underground stations and also the shops and bars local to the area. There is also a vast array of restaurants, coffee shops and boutiques close by and the green open spaces of both Tooting Bec Common and Wandsworth Common are also easily accessible.









Total area (approx.): 120.8 sq. m (1300.2 sq. ft)

#### JACKSONS BALHAM

8-11 Balham Station Road,  
London, SW12 9SG  
Sales: 020 8675 6555  
Lettings: 020 8675 6565

Energy Rating: We aim to make our particulars both accurate and reliable. However they are not guaranteed; nor do they form part of an offer or contract. If you require clarification on any points then please contact us, especially if you're traveling some distance to view. Please note that appliances and heating systems have not been tested and therefore no warranties can be given as to their good working order.