



RAMSDEN ROAD, SW12

£550,000

- One Double Bedroom
- Central Balham
- Beautifully Finished
- No Onward Chain
- Victorian Conversion
- EPC Rating: C





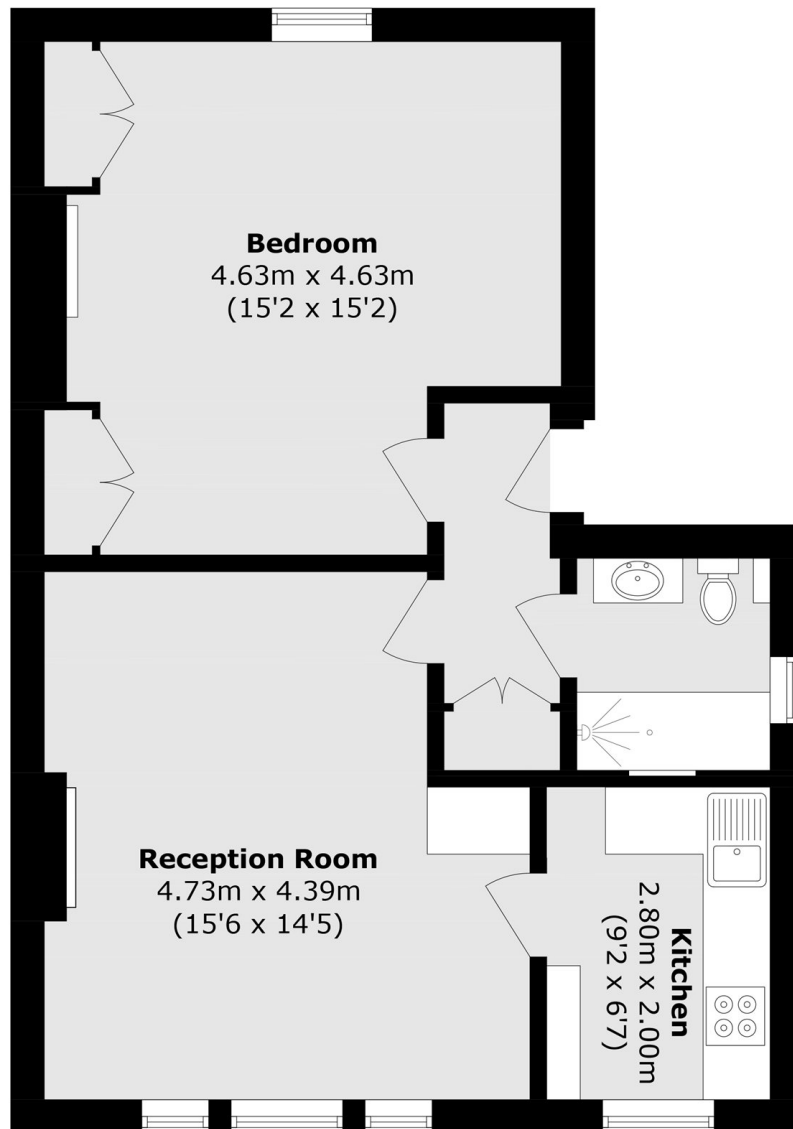
ABOUT THE HOME

An immaculate and recently refurbished one bedroom Victorian flat located on the the highly regarded Ramsden Road moments from Balham Station and the high street. The property is also offered with a share of freehold and no onward chain.

Ramsden Road is a popular road in the heart of Balham's popular Nightingale Triangle. Balham mainline and Underground stations are within easy reach as are the vast array of shops, bars and restaurants local to the area. The green open spaces of Wandsworth Common are also close by.







Total area (approx.): 52.8 sq. m (568.3 sq. ft)

JACKSONS BALHAM

8-11 Balham Station Road,
London, SW12 9SG
Sales: 020 8675 6555
Lettings: 020 8675 6565

Energy Rating: We aim to make our particulars both accurate and reliable. However they are not guaranteed; nor do they form part of an offer or contract. If you require clarification on any points then please contact us, especially if you're traveling some distance to view. Please note that appliances and heating systems have not been tested and therefore no warranties can be given as to their good working order.