



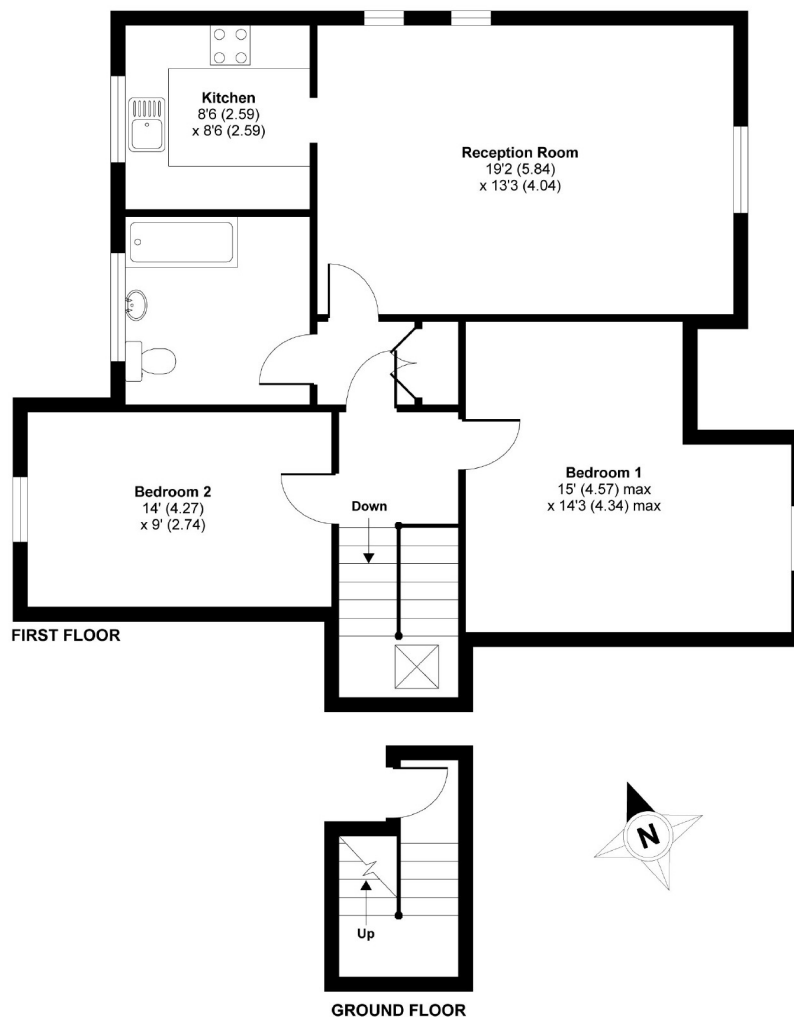
Balham High Road, SW17

£1,650 PCM

A first floor Victorian conversion flat located on Balham High Road. This property would be ideal for a professional couple or professional sharers.

- Reception Room
- Fitted Kitchen
- Two Double Bedrooms
- Fitted Bathroom
- Close to Station
- Part Furnished

For further information on the costs associated with renting a property, please pop into our office or visit our website.



APPROX. GROSS INTERNAL FLOOR AREA 883 SQ FT 82 SQ METRES

Balham High Road, London, SW17

Copyright nichecom.co.uk 2011 Produced for Jacksons the Independent Estate Agents REF : 189230

Jacksons Balham
8-11 Balham Station Road
London
SW12 9SG
020 8675 6565
balham.lettings@jacksonsestateagents.com

Energy Rating: E We aim to make our particulars both accurate and reliable. However they are not guaranteed; nor do they form part of an offer or contract. If you require clarification on any points then please contact us, especially if you're traveling some distance to view. Please note that appliances and heating systems have not been tested and therefore no warranties can be given as to their good working order.