



ST. JAMES'S DRIVE, SW17

£2,750 PCM

- Three double bedroom
- Spacious reception room
- Fitted kitchen
- Two bathrooms
- Part furnished
- Energy rating: D



3



2



1



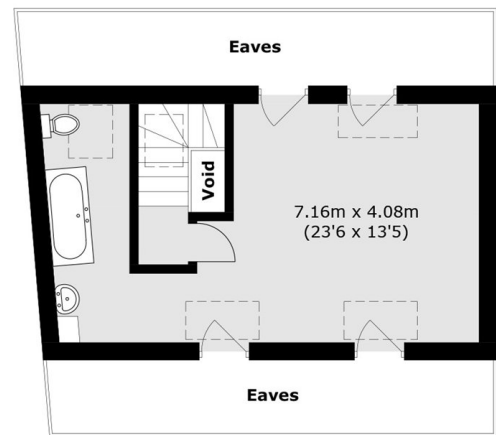
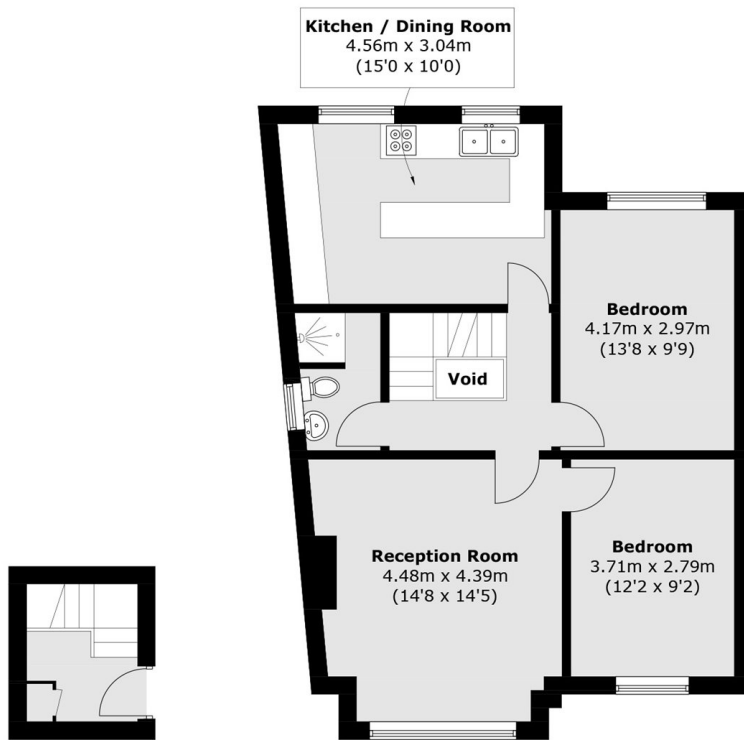
ABOUT THE HOME

A three double bedroom flat with a spacious reception room and fitted kitchen. This property would be ideal for a family or a professional couple.

St James Drive is ideally located between Balham and Wandsworth Common and the plethora of shops, bars and restaurants these locations have to offer.







Total area (approx.): 100.8 sq. m (1084.9 sq. ft)
(Excluding Eaves and Voids)

JACKSONS BALHAM

8-11 Balham Station Road,
London, SW12 9SG
Sales: 020 8675 6555
Lettings: 020 8675 6565

Energy Rating: We aim to make our particulars both accurate and reliable. However they are not guaranteed; nor do they form part of an offer or contract. If you require clarification on any points then please contact us, especially if you're traveling some distance to view. Please note that appliances and heating systems have not been tested and therefore no warranties can be given as to their good working order.