



ELMFIELD ROAD, SW17

£675,000

- Two Double Bedrooms
- Open-Plan Kitchen/Living
- Top Floor
- Modern Finish
- Roof Terrace
- Energy Rating:D





ABOUT THE HOME

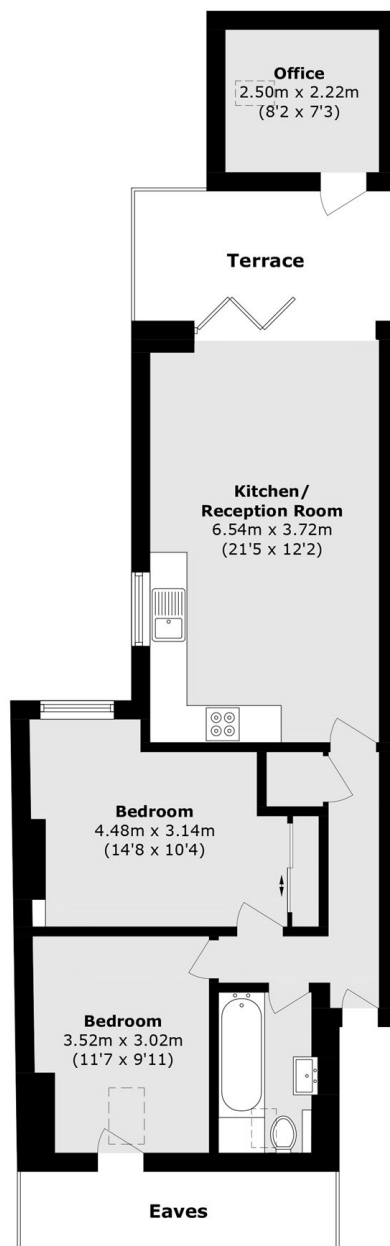
An impressive two bedroom top floor flat in a beautiful Victorian mansion building. This light and airy property is well presented throughout and has incredibly high ceilings. There is a modern open-plan kitchen/living room with bifolding doors out to a private South facing roof terrace. The property offers excellent storage and also has a room off the roof terrace which would make an ideal home office.



Elmfield Mansions sits on Elmfield Road in Central Balham which benefits from a host of local amenities including shops, bars restaurants and supermarkets. Balham Station is also within close proximity offering mainline and Northern line services.







Total area (approx.): 66.1 sq. m (711.5 sq. ft)
(Excluding Eaves)

Terrace area (approx.): 7.8 sq. m (83.9 sq. ft)

JACKSONS BALHAM

8-11 Balham Station Road,
London, SW12 9SG
Sales: 020 8675 6555
Lettings: 020 8675 6565

Energy Rating: D We aim to make our particulars both accurate and reliable. However they are not guaranteed; nor do they form part of an offer or contract. If you require clarification on any points then please contact us, especially if you're traveling some distance to view. Please note that appliances and heating systems have not been tested and therefore no warranties can be given as to their good working order.