



CULVERDEN ROAD, SW12

£585,000

- Two Double Bedrooms
- Victorian Conversion
- Split Level
- Shared Garden
- Share of Freehold
- Energy Rating: C



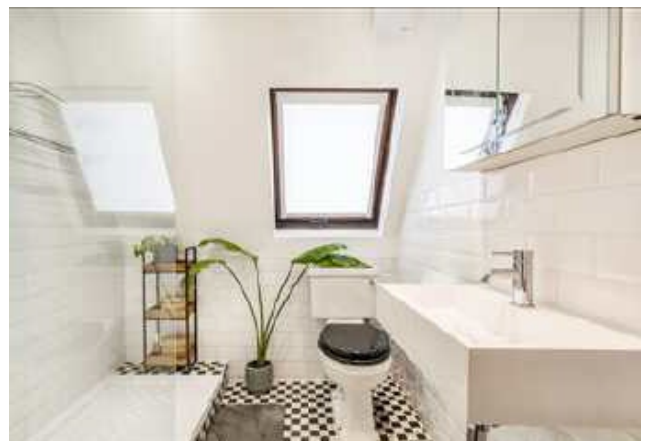


ABOUT THE HOME

A beautifully presented two double bedroom top floor split level flat on Culverden Road. This lovely home has a large reception room, with space for dining, a recently renovated kitchen, and a contemporary bathroom, also refurbished by the current owner. This property is located moments from Tooting Bec Common, has a shared garden and is offered with the share of freehold.



Located on Culverden Road in Balham, this property is well situated for easy access to Balham mainline and underground stations, offering excellent transport links into the City. The shops, bars and restaurants local to the area are also close by, as are the green open spaces of Tooting Bec Common, making this a highly desirable location.







Total area (approx.): 64.9 sq. m (698.5 sq. ft)

JACKSONS BALHAM

8-11 Balham Station Road,
London, SW12 9SG
Sales: 020 8675 6555
Lettings: 020 8675 6565

Energy Rating: We aim to make our particulars both accurate and reliable. However they are not guaranteed; nor do they form part of an offer or contract. If you require clarification on any points then please contact us, especially if you're traveling some distance to view. Please note that appliances and heating systems have not been tested and therefore no warranties can be given as to their good working order.