



Asher Way, E1W
£710,000

Dexters



Asher Way, E1W

Offered to the market with no onward chain is this well-presented two-bedroom split-level home, located within the highly sought-after Quay 430 development. The property boasts an impressive private roof terrace of approximately 880 square feet, offering stunning views of the City and the Shard. Additional features include floor-to-ceiling windows in the reception room, an allocated garage, and the convenience of a day porter.

Tower Bridge and St Katharine Docks are within easy reach, while Tower Hill, Aldgate, and Wapping stations are all easily accessible, offering excellent transport links across London.

Features

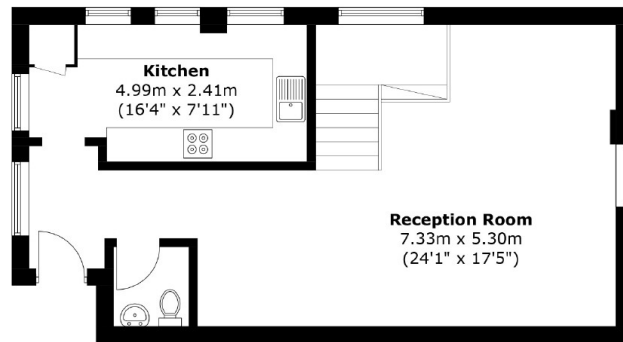
- Allocated Garage
- Day Porter
- Split Level
- Private Roof Terrace
- West Wapping
- Two Double Bedrooms



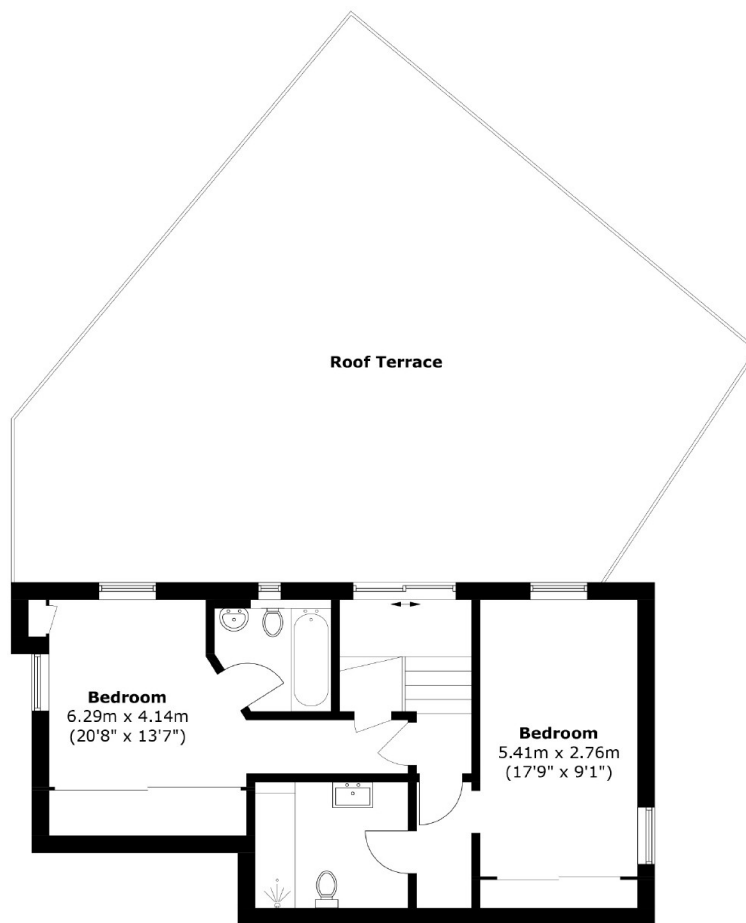




Asher Way, London, E1W



Fourth Floor



Third Floor

Total area: Approx. 104.8 sq. meters (1,128.1 sq. feet)
Plus Roof Terrace, approx. 81.9 sq. meters (881.6 sq. feet)