



Star Place, E1W

£1,495,000

Dexters



Star Place, E1W

A rarely available fifth floor modern apartment finished to a very high specification and impeccable views of St Katherine's Docks from the private balcony. Features to include 24 concierge services, allocated parking space, a long lease and offered on a chain free basis.

As you enter the property you're welcomed by a spacious hallway with ample storage. To the left of the property is two very generous sized bedrooms, one offering an en-suite. As you walk down to the other side of the property, you're hit with an abundance of natural light from the flooring to ceiling windows. The reception room offers access to the balcony as well as the kitchen with views over the St Katherine's Docks.

Star Place is very well located just moments from St Katherine's Docks where there's a great selection of bars and restaurants. In addition, Tower Hill Station is just 0.2 miles away.

Features

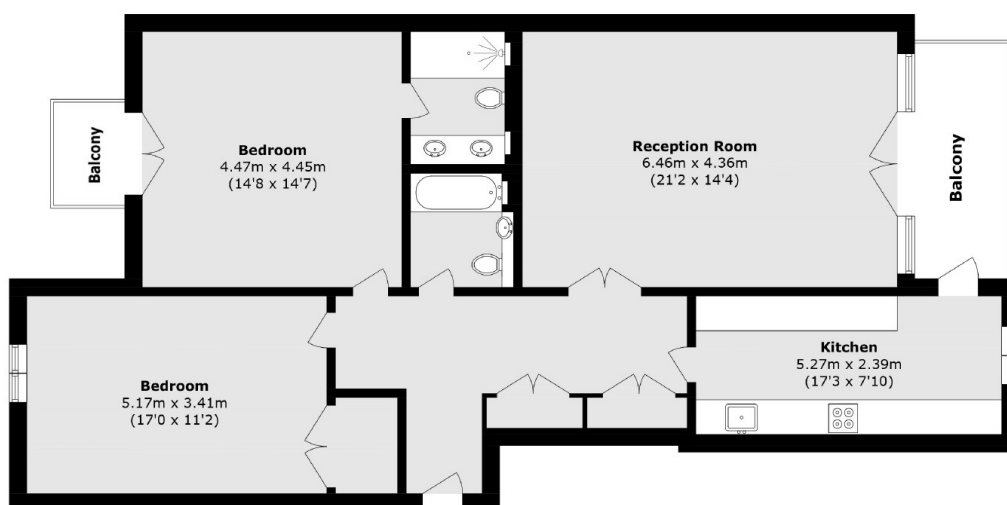
- High Specification Throughout
- Views Of St Katherine's Docks
- Allocated Parking
- 24 Hour Concierge
- Long Lease
- Chain Free







Star Place, London, E1W



Total area (approx.): 107 sq. m (1151.7 sq. ft)

Balcony Total (approx.): 8.6 sq. m (92.5 sq. ft)

Dexters

Wapping
123 Wapping High Street
London
E1W 3NX

Sales
020 7650 5350

Energy Rating: C. We aim to make our particulars both accurate and reliable. However they are not guaranteed; nor do they form part of an offer or contract. If you require clarification on any points then please contact us, especially if you're traveling some distance to view. Please note that appliances and heating systems have not been tested and therefore no warranties can be given as to their good working order.

 **RICS** | Regulated
Estate Agent
and Letting Agent

[dexters.co.uk](https://www.dexters.co.uk)