



## Geere Road, E15

### £575,000

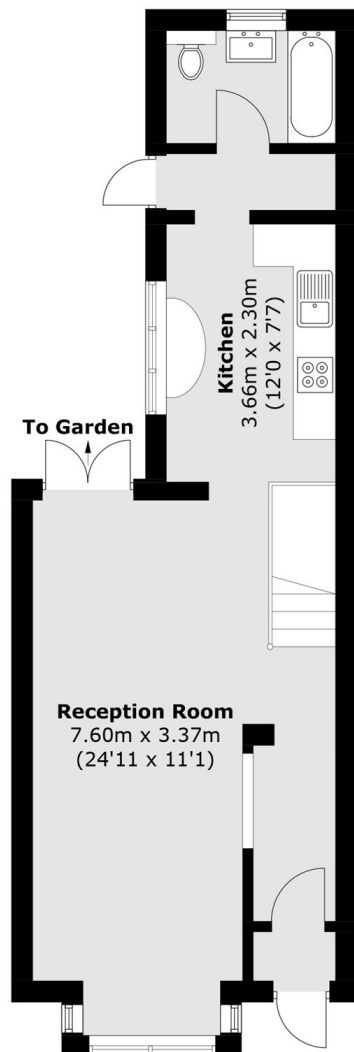
A beautifully presented terraced house on Geere Road, offering 908 square feet of internal space. The property features two bathrooms, a spacious private garden, and is ideally located just moments from the station.

Geere Road is conveniently located just 0.4 miles from Plaistow Station, which provides excellent transport links across the City.

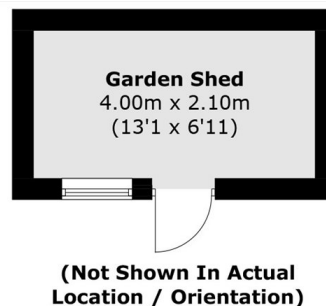
### Features

908 Square Feet  
Large Private Garden  
Freehold House  
Three Bedrooms  
Two Bathrooms  
Beautifully Presented

# Geere Road, London, E15



**Ground Floor**



**First Floor**

Total area (approx.): 85.4 sq. m (919.2 sq. ft)  
Garden Shed: 8.5 sq. m (91.5 sq. ft)