



## Wapping Lane, E1W

£350,000

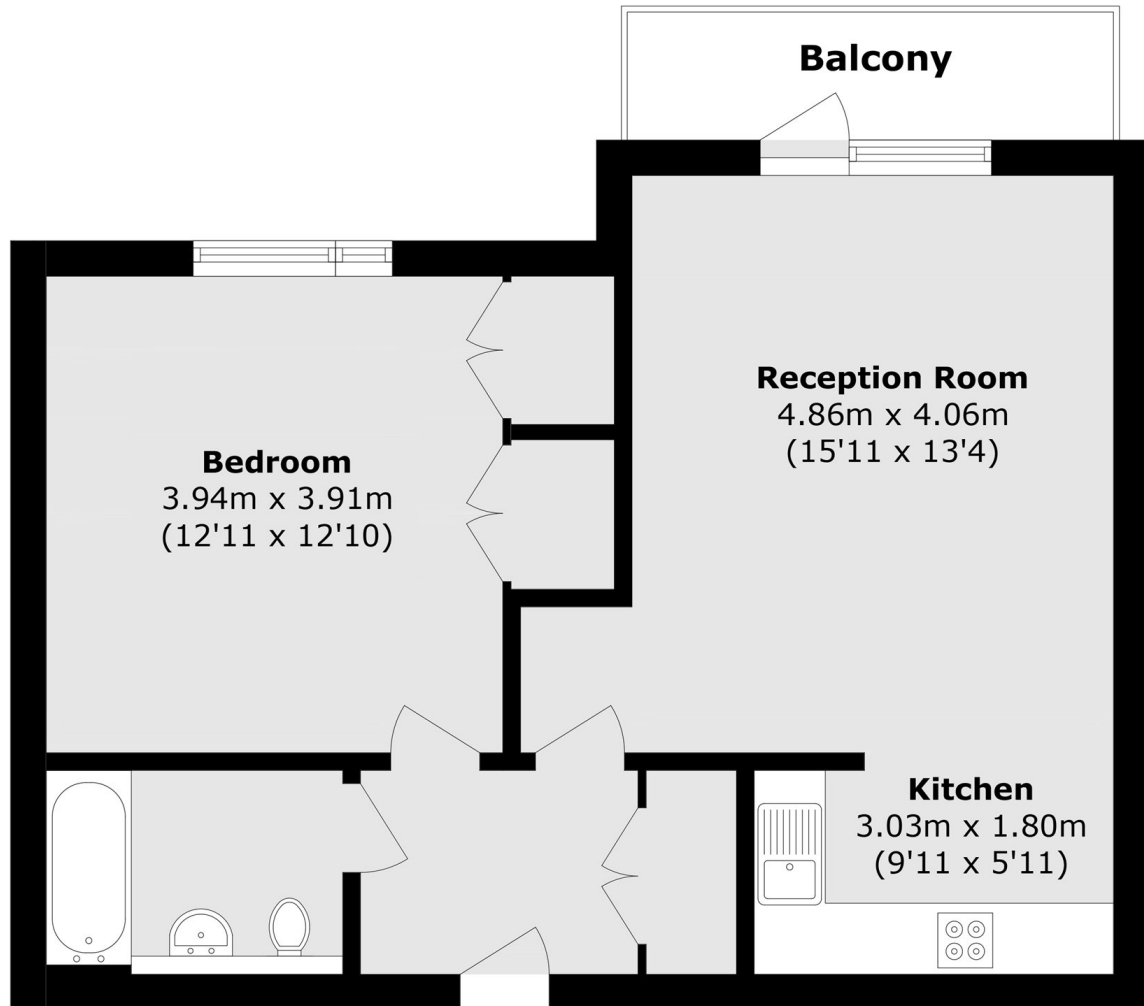
Offered to the market is this well-presented one-bedroom apartment, ideally situated in the heart of Wapping. The property features an open-plan reception room with access to a private balcony, a modern kitchen and bathroom, as well as lift access and a secure entry phone system.

Eluna Apartments is ideally situated just 0.5 miles from Wapping Station and 0.3 miles from Shadwell DLR, both offering swift connections to the City and Canary Wharf.

### Features

- 607 Square Feet
- Private Balcony
- Modern Throughout
- Lift Access
- Entry Phone System
- No Onward Chain

# Wapping Lane, London, E1W



Total area (approx.): 56.4 sq. m (607.0 sq. ft)  
Balcony area (approx.): 4.4 sq. m (47.3 sq. ft)