



**Prospect Place, E1W**

**£1,100,000**

**Dexters**



## Prospect Place, E1W

Tucked away within the sought-after gated community of Prospect Place, this beautifully refurbished three-bedroom home offers the perfect blend of space, comfort, and future potential.

Arranged over three floors, the property has been thoughtfully updated throughout, creating a warm and welcoming home that is ready to move straight into. The flexible layout provides excellent space for modern family life, with bright and well-proportioned rooms across each level.

One of the standout features is the private garage, offering secure parking, additional storage, or the opportunity to create further living accommodation. Subject to the necessary permissions, there is also exciting potential to extend into the garage and add an additional floor above, allowing the property to grow alongside your family's needs.

Prospect Place is a gated development known for its sense of community and attractive communal gardens, providing residents with beautifully maintained outdoor space to enjoy throughout the year.

Prospect Place is conveniently located a short walk away from Wapping Overground Station (0.2 miles) and Shadwell DLR is in close proximity (0.6 miles). The local area offers an array of restaurants and pubs, many of which are historic.

### Features

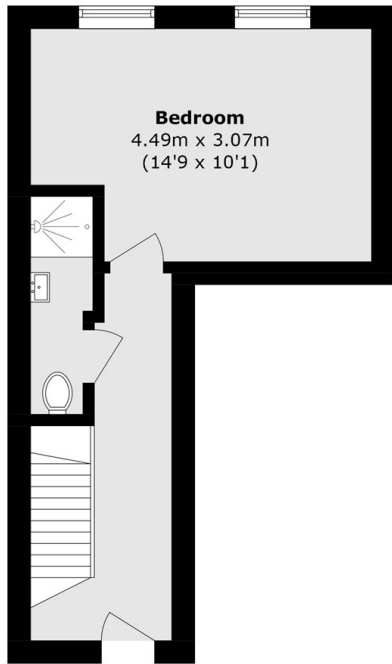
- Three Double Bedroom
- Three Floors
- Gated Development
- Private Garage
- Communal Garden
- South Facing



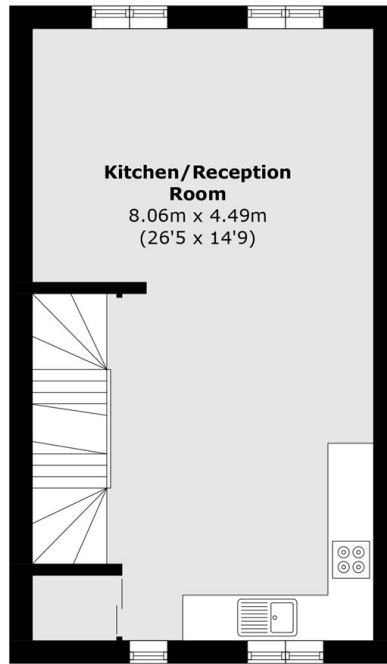




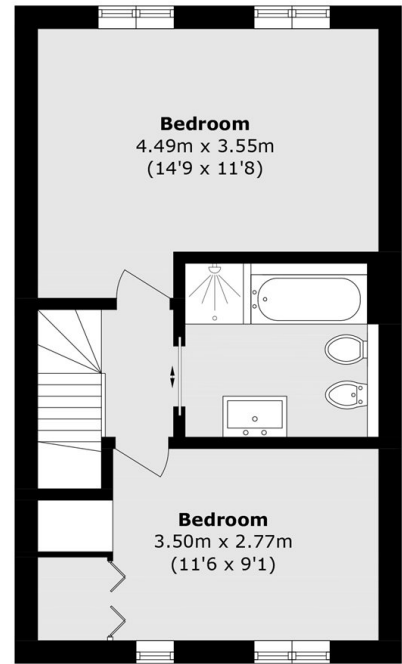
# Prospect Place, London, E1W



**Ground Floor**



**First Floor**



**Second Floor**

Total area (approx.): 95.4 sq. m (1026.8 sq. ft)