



Burr Close, E1W

£380,000

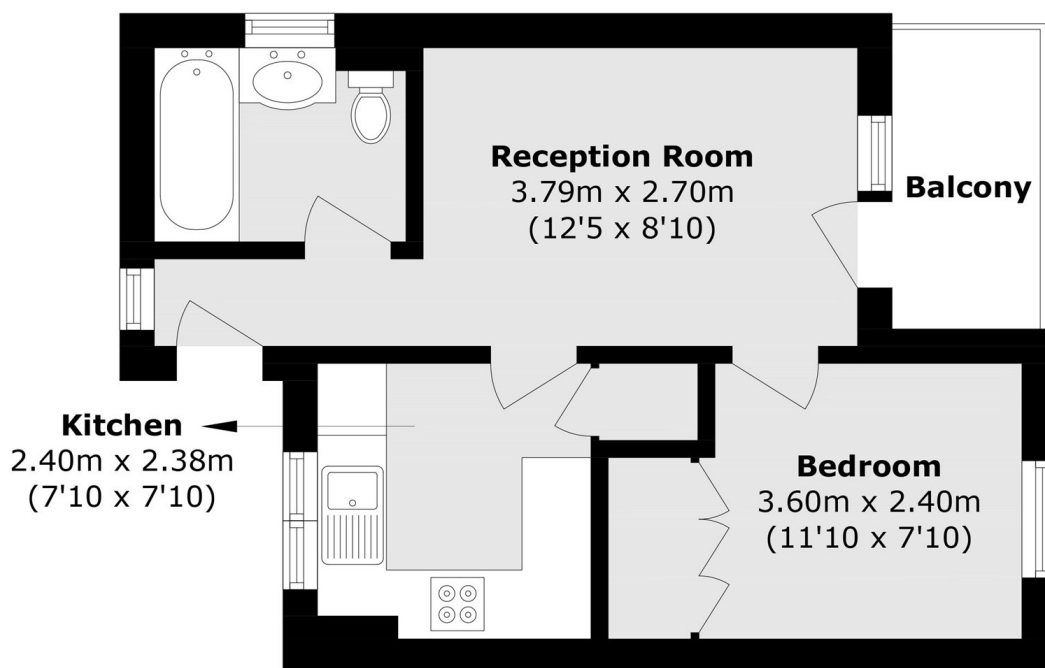
Situated within one of Wapping's most sought-after developments, we are pleased to present this well-presented one-bedroom apartment with views of the Canary Wharf skyline. The property benefits from a secure entry phone system and a private balcony. The marina provides immediate access to a range of restaurants, traditional pubs, including The Dickens Inn, and scenic riverside walks along the Thames.

Burr Close is within walking distance of St Katharine Docks (approximately 0.1 miles away), offering a wide range of restaurants, pubs and local amenities. Tower Hill station is also approximately 0.6 miles from the development, providing convenient access to the City and the wider transport network.

Features

- One Bedroom
- Secure Entry Phone System
- Canary Wharf Views
- Easy Access To The City
- Secure Development
- Ample Storage

Burr Close, London, E1W



Seventh Floor

Total area (approx): 31.3 sq. m (336.9 sq. ft)

Balcony area (approx): 3.3 sq. m (35.5 sq. ft)