



Gascoyne Road (opposite Well Street Common)

**Asking Price Of
£450,000**



**TWO DOUBLE BEDROOMS
VIEWS OVER WELL STREET COMMON
RECENTLY REDECORATED
TOP FLOOR
120 YEAR LEASE
BALCONY**



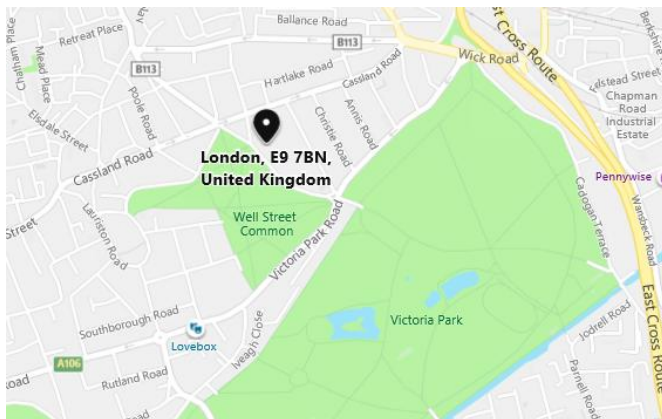


Gascoyne House is arguably one of the most requested addresses local to Well Street Common & Victoria Park,

Our apartment is found on the top floor of this attractive low rise block offering far reaching views across well street common with access to you private balcony from both the lounge & master bedroom

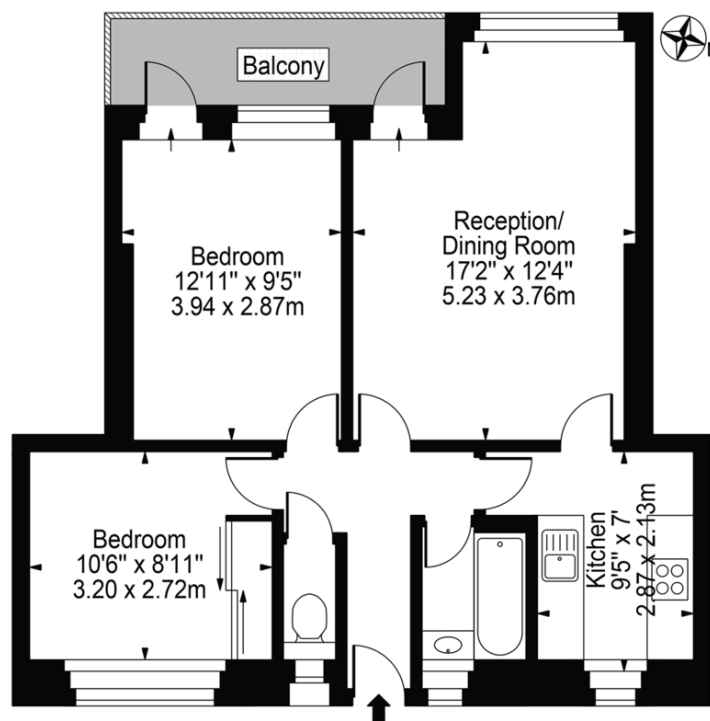
The property boasts 2 genuine double bedrooms, spacious lounge, separate kitchen, bathroom, WC as well as lots of storage options, the current owners have recently modernised throughout meaning any purchaser will be able to just move straight in





Gascoyne House

Approx. Gross Internal Area 590 Sq Ft - 54.81 Sq M



Fourth Floor

For Illustration Purposes Only - Not To Scale

This floor plan should be used as a general outline for guidance only and does not constitute in whole or in part an offer or contract. Any intending purchaser or lessee should satisfy themselves by inspection, searches, enquiries and full survey as to the correctness of each statement. Any areas, measurements or distances quoted are approximate and should not be used to value a property or be the basis of any sale or let.

Service/Maintenance Charge

£9

Ground Rent

£1,090

Please contact our office at

213 Victoria Park Road
London,
E9 7HD

020 8985 5800

sovereign-house.com

vicparksales@sovereign-house.com



**DAYS A
WEEK**



**FREE
VALUATIONS**



**FLOOR
PLANS**



**FULL COLOUR
PHOTOGRAPHY**



**SMS
TEXT ALERTS**



**MORTGAGE
ADVICE**



**COLOUR
MAPS**

Victoria Park Sales
213 Victoria Park Road
London E9 7HD
Tel: 020 8985 5800



@sovereignhouse



www.facebook.com/sovereignhousehackney

Clayhall/Redbridge Sales
176 Longwood Gardens,
Essex IG5 0EW
Tel: 020 8220 1500

