



**Offers In Region Of £325,000**

EPC Rating 'C'

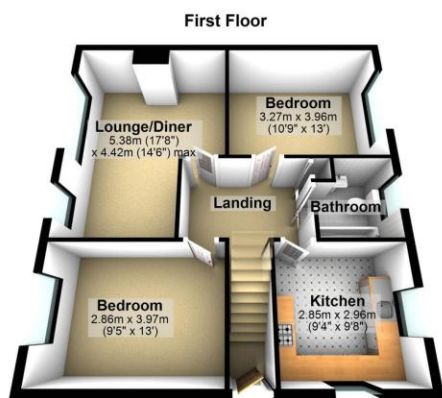
**Caernarvon Drive**

Clayhall, IG5

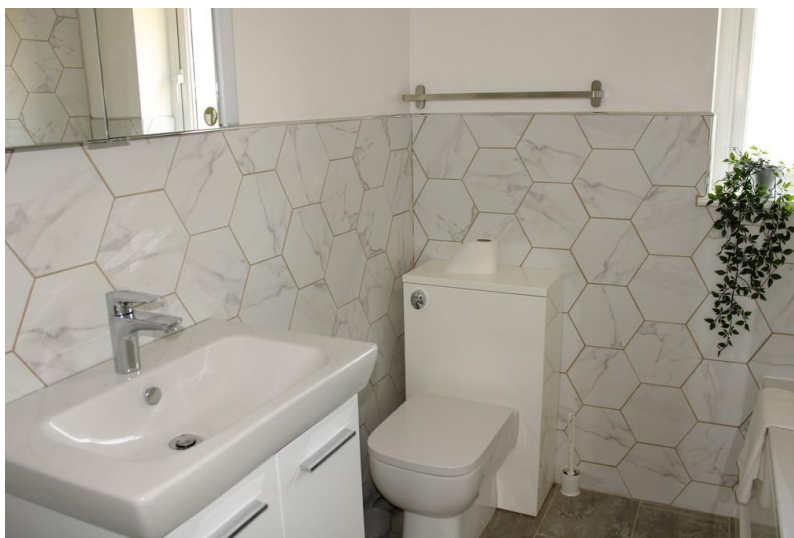


- Two Good Size Bedrooms
- Lounge/Diner
- Modern Fitted Kitchen & Bathroom
- Chain Free – Recently Renovated





Total area: approx. 67.7 sq. metres (729.1 sq. feet)



Sovereign House  
176 Longwood Gardens  
Ilford  
Essex  
IG5 0EW

[www.sovereign-house.com](http://www.sovereign-house.com)  
[homes@sovereign-house.com](mailto:homes@sovereign-house.com)  
02082201500

Agents Note: Whilst every care has been taken to prepare these sales particulars, they are for guidance purposes only. All measurements are approximate are for general guidance purposes only and whilst every care has been taken to ensure their accuracy, they should not be relied upon and potential buyers are advised to recheck the measurements.