



Asking Price Of £335,000

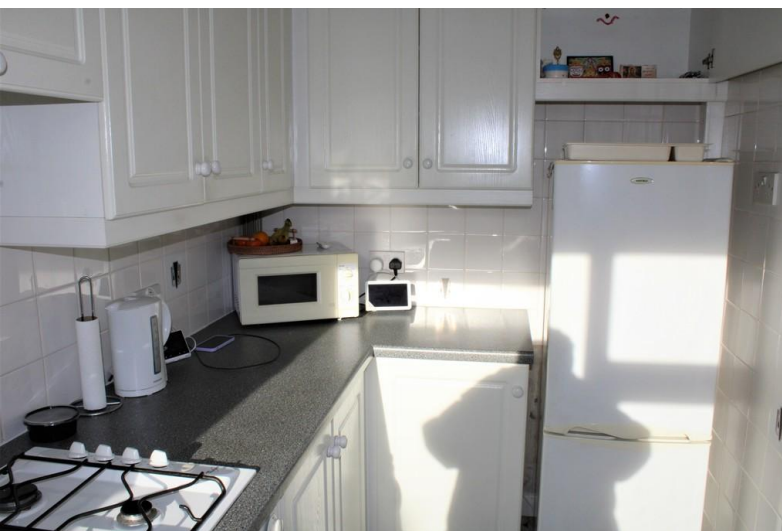
EPC Rating 'C' – SHARE OF FREEHOLD

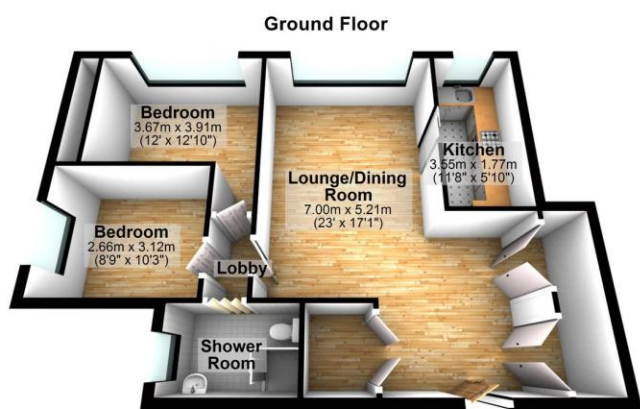
Courtney Lodge

Barkingside, IG6



- Ground Floor Flat, Two Good Size Bedrooms
- Shower Room, Kitchen
- Spacious Lounge, Garage
- Close To Barkingside Station, Chain Free





Total area: approx. 62.2 sq. metres (669.2 sq. feet)



Sovereign House
176 Longwood Gardens
Ilford
Essex
IG5 0EW

www.sovereign-house.com
homes@sovereign-house.com
02082201500

Agents Note: Whilst every care has been taken to prepare these sales particulars, they are for guidance purposes only. All measurements are approximate are for general guidance purposes only and whilst every care has been taken to ensure their accuracy, they should not be relied upon and potential buyers are advised to recheck the measurements